

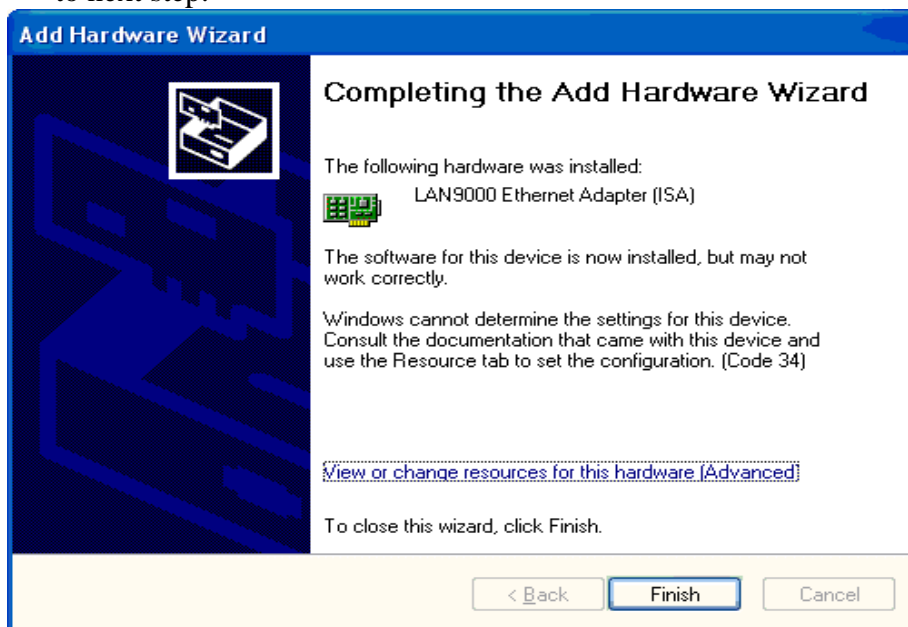
This document explains the procedure for the installation of the SMSC LAN91C111 driver running on Windows XP embedded platform.

Release Files:

1. Readme.pdf —This file
2. NET9000.INF—Installation file
3. lan9000.sys—The driver file, version 5.1.1.0

Installation Procedure:


1. From Control panel, select “Add hardware”
2. In Add hardware wizard, select “Add a new hardware device” from the install hardware list box
3. On the next page, select “Install the hardware that I manually select from a list”
4. On the next page, select “Network adapters” from Common hardware types list box.
5. From “Select Network adapter” page, click “Have Disk...” button.
6. Follow the instructions from the wizard, browse to the NET9000.INF.
7. On the final page as follows, select “**View or change resources for this hardware**”, go to next step.





8. On the following page, setup the I/O Range to 0300-030F, and the IRQ to 10.

Add Hardware Wizard Properties [?] [X]

Resources

 LAN9000 Ethernet Adapter (ISA)

Resource settings:

Resource type	Setting
 I/O Range	0300 - 030F
 IRQ	10

Setting based on: Basic configuration 0000 [v]

☐ Use automatic settings Change Setting...

Conflicting device list:

No conflicts.

OK Cancel