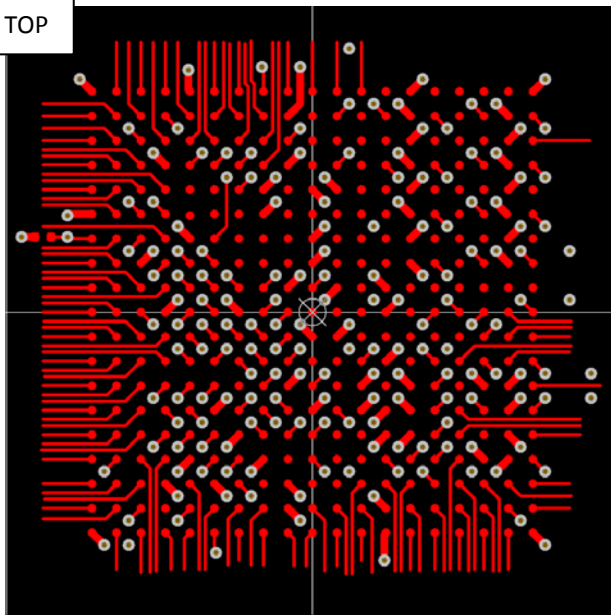


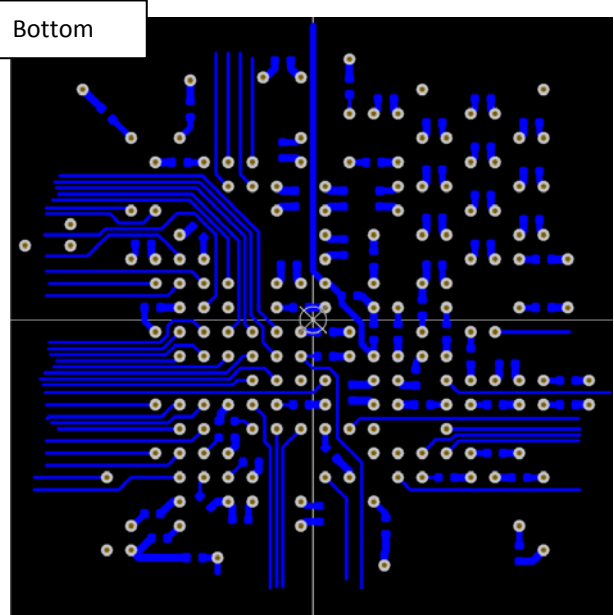
*Routing SAMA5D27\_LPDDR2" BGA361*

- 4 Layers
- Ball Pitch 0.8 mm
- Matrice 19x19 (361Balls)
- Balls land 0.3mm
- Via 0.4 x 0.2
- Trace width 0.1mm Clearance 0.1mm
- Decoupling cap footprint 0201

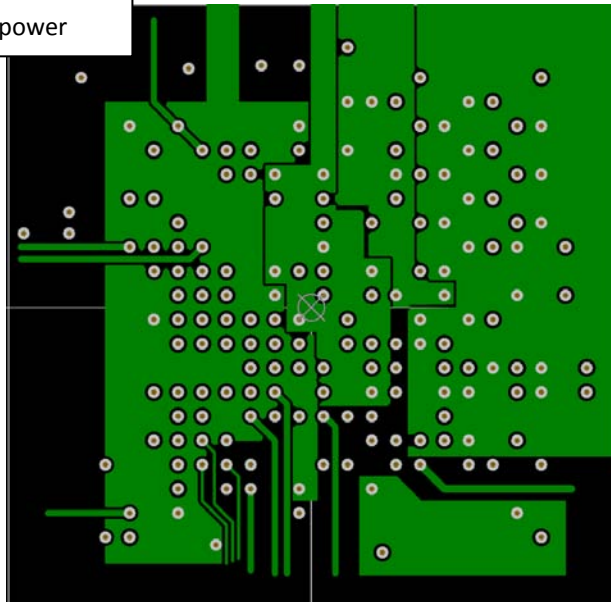
TOP



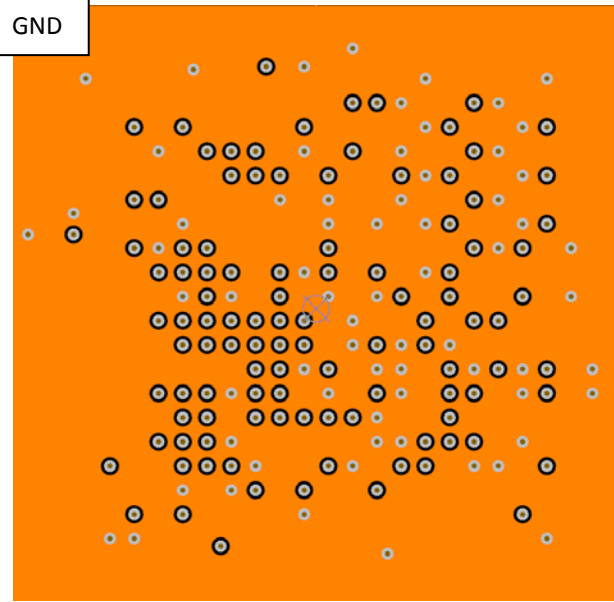
Bottom



power



GND



**DISCLAIMER:** this is a theoretical routing given as helper for customers to derive their own design from.  
**No actual PCB was built from these files to validate the manufacturing.**

Yet, this design was made with realistic/achievable track widths, isolation distances, vias diameter and drilling.

In any case, the end re-user of such files should always check the given dimensions against his PCB manufacturer's recommendations and might apply fine tuning if required by PCB technology or manufacturing process.