

TAPE100 3M4032

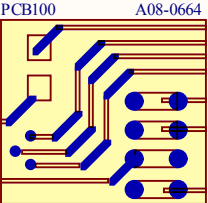
3M4032 Double-sided tape
50mm x 19mm x 0.88mm


TAPE101 3M4032

3M4032 Double-sided tape
50mm x 19mm x 0.88mm

LABEL100 Label PCBA

Product number/revision
Serial number



ATMEL Norway					
Vestre Rosten 79					
7075 TILLER					
NORWAY					
Date:	22.09.2009	16:22:57	PAGE:	1 of 1	
Document number:	A08-0664		Revision:	2	
TITLE: AVR1909: Display Xplained					
Display_Xplained.SchDoc					

AVR1909: Display Xplained

Display_Xplained.PrjPCB

Display_Xplained.PrjPCB

None

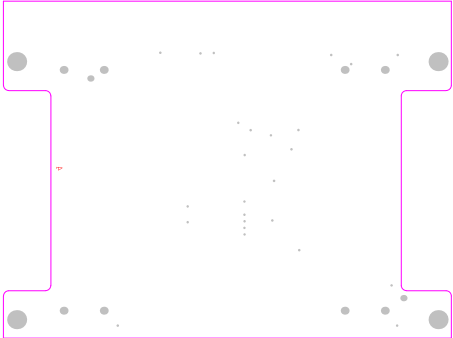
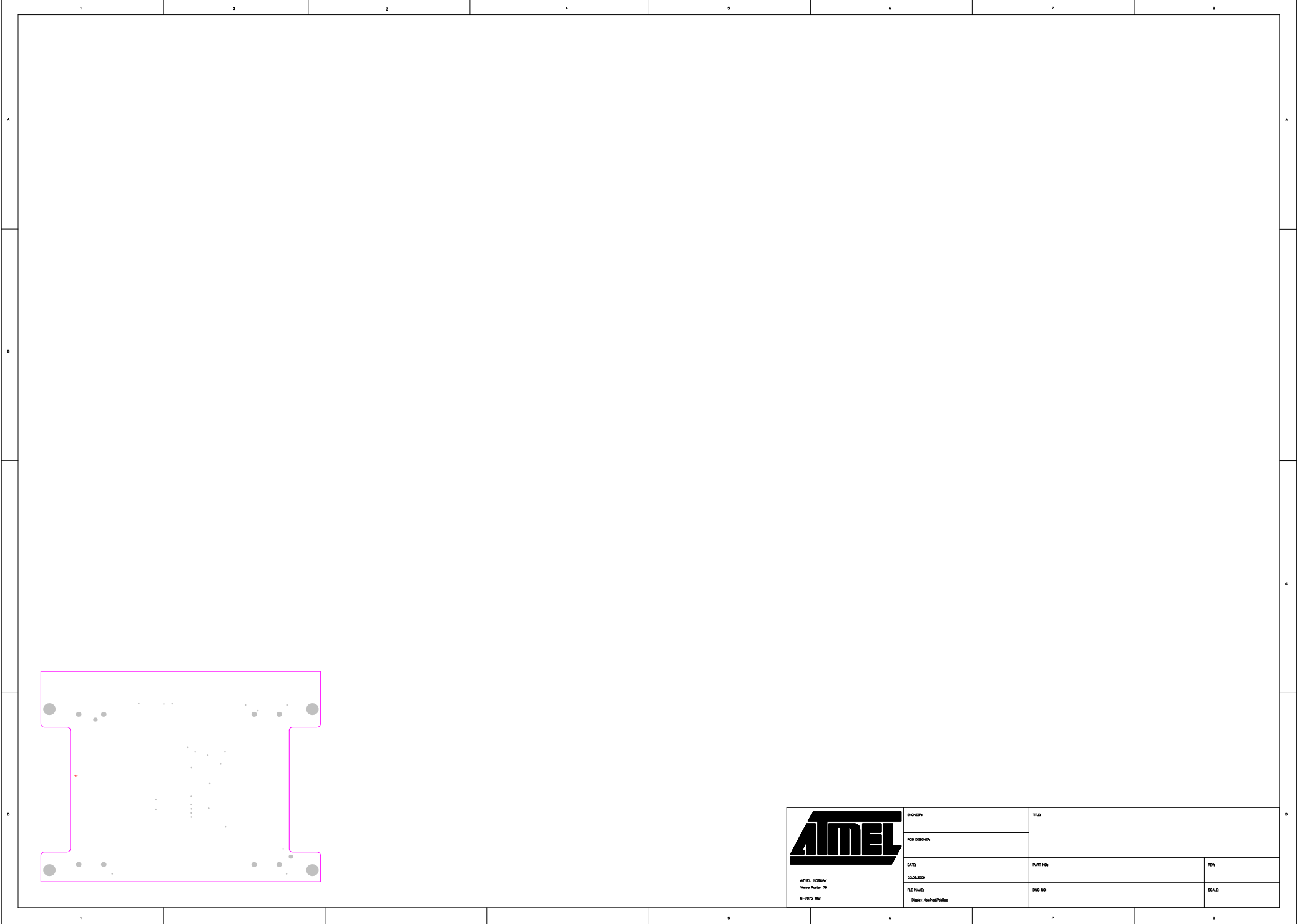
16:22:59


4:23:05 PM

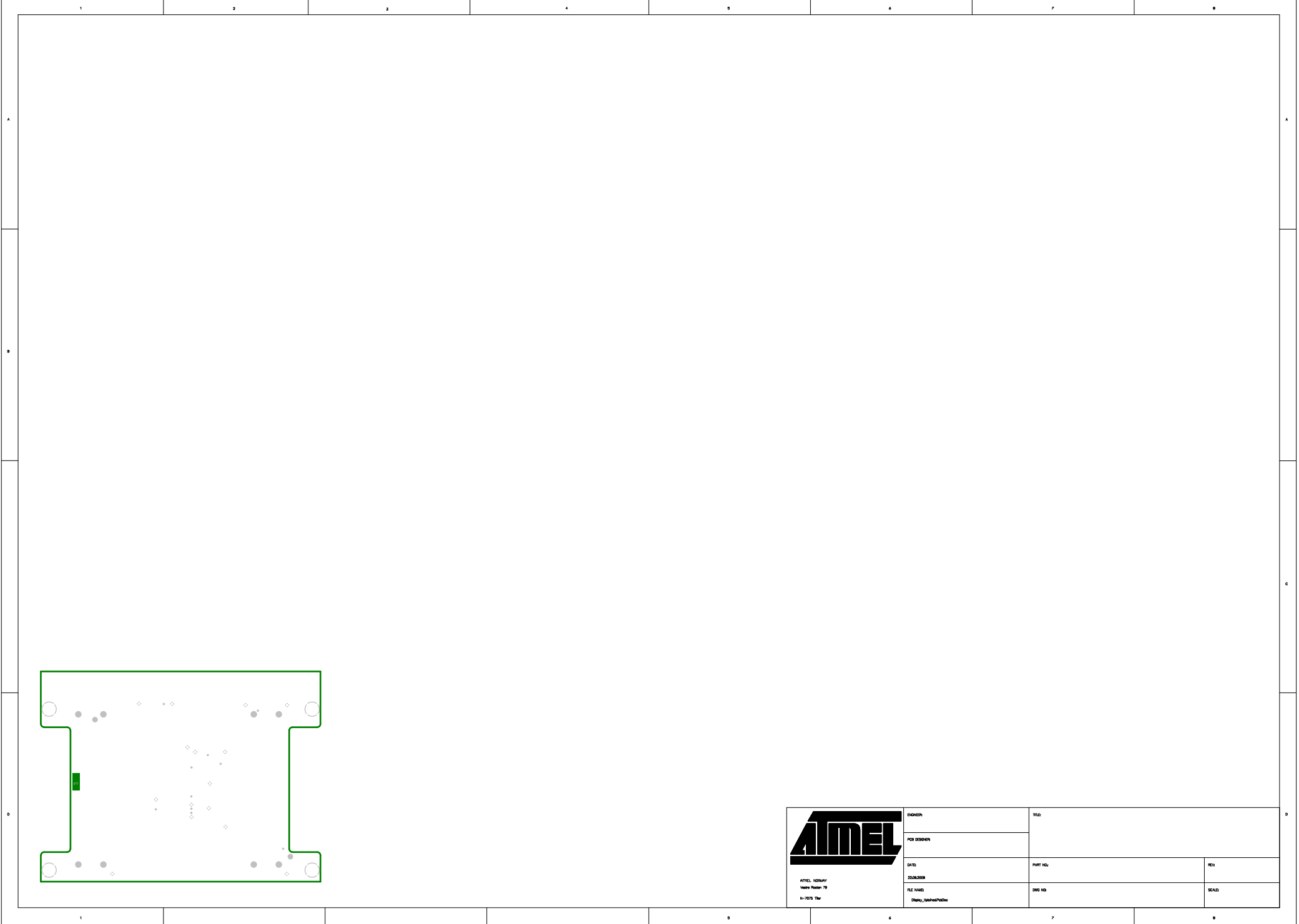


30

Notes

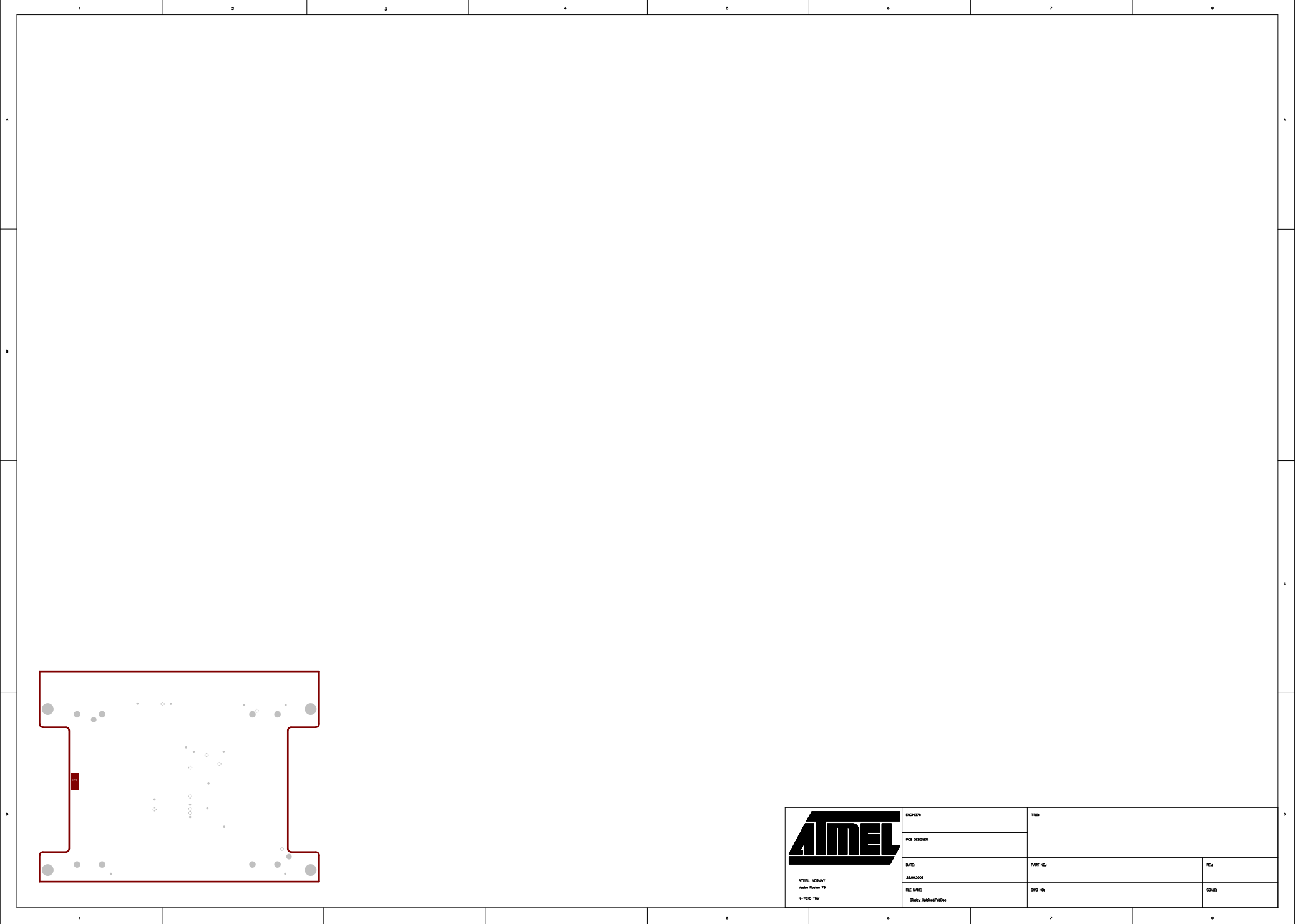


 ATMEL, MICROCHIP Memory Products Division 16-00000-000	DRAWING		TITLE	
	FOR DESIGNER			
	DATE: 22.06.2008	PART NO.		REV.
	FILE NAME: Drawing_16000000.dwg	DWG NO.		SCALE



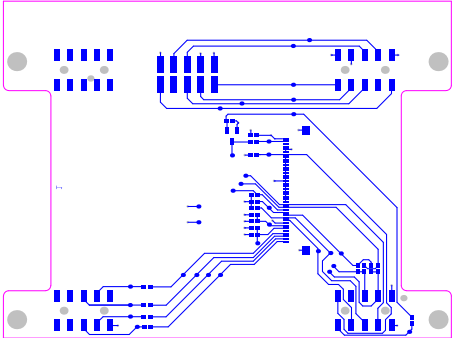
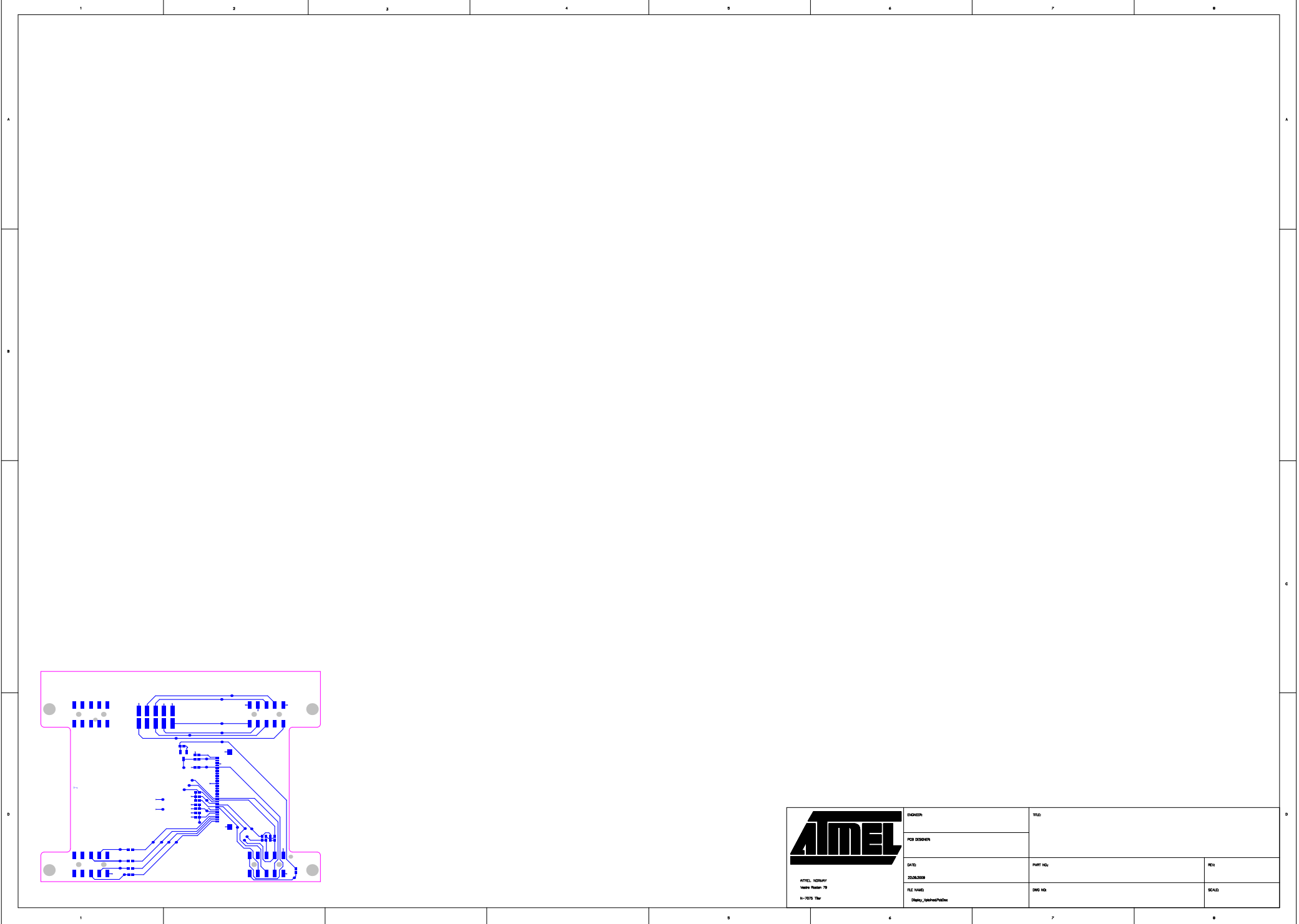
ATMEL, MICROCHIP
Memory Products Division
N-7075 Rev

EVALUATOR		TITLE	
FOR DESIGNER			
DATE	PART NO.		REV.
22.06.2008			
FILE NAME	DWG NO.	SCALE	
Display_1pinhead.mxd			



ATMEL, MICRO
VOLUME 1000 70
N-7075 100

BOOKEND	TITLE	
FOR DESIGNER		
DATE	PART NO.	REV.
22.06.2008		
FILE NAME	DWG NO.	SCALE
Design_1000000000		



ATMEL, MICRO
VOLUME PAPER 78
N-7075 10/01

DESIGNER:		TITLE:	
PCB DESIGNER			
DATE:	PART NO.		REV.
22.06.2008			
FILE NAME:	DWG NO.		SCALE:
Design_0000000000			

1

2

3

4

8

•

1

1

c

9

13

1

3

•



ATTTEL NORWAY
Vestre Rosten 79
N-7075 Tiller

DO NOT

PCB DESIGNER

DATE:

22.09.2008

Display_XpinedPcsDoc

	THE
--	-----

DATE:

22.09.2008

Display_XpinedPcdDoc

PART NO.

--	--

1

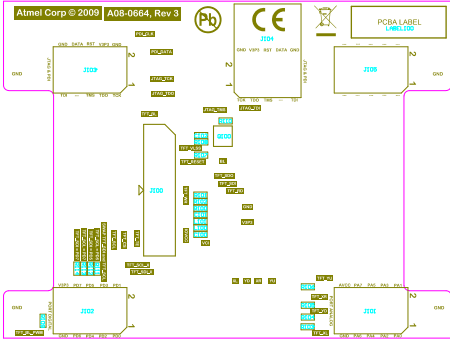
--	--

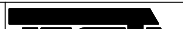
--	--

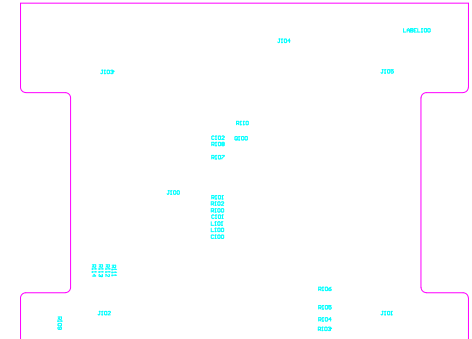
		REF	FOOTNOTES
		POWER SUPPLY	
TYPE	DATA TRANS	STATUS	REMARKS
STATUS	DATA TRANS	STATUS	REMARKS

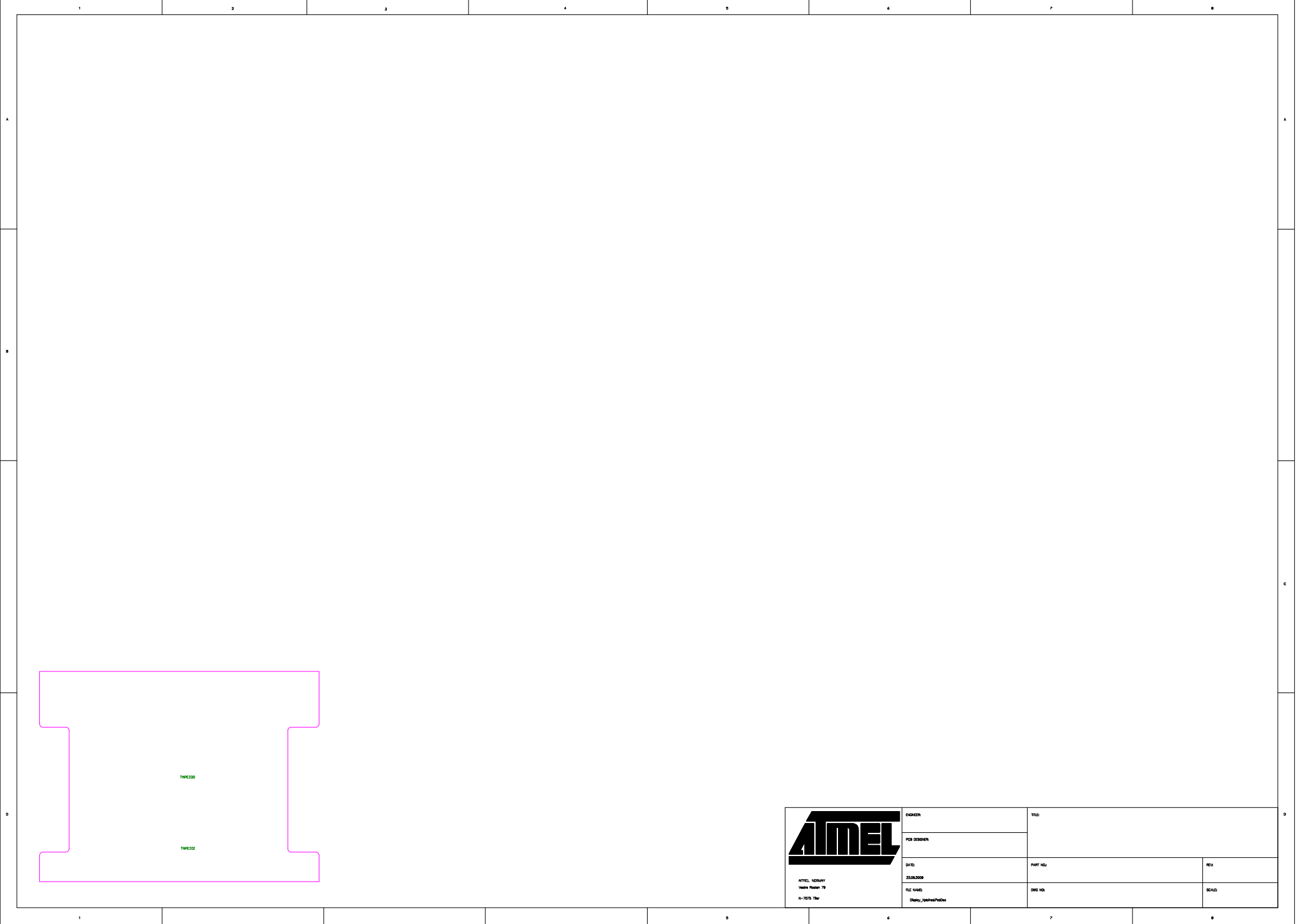
ATMEL

ATMEL CORPORATION
161 N. RIVER STREET
SHELTON, CT 06484-1101
TEL: 203-375-4000



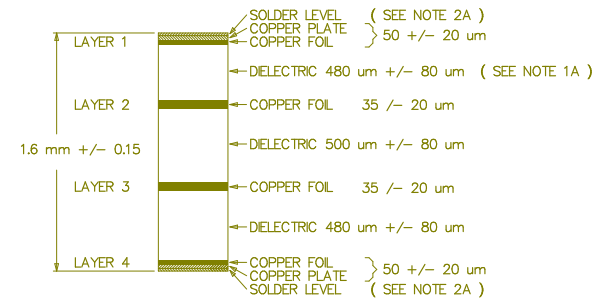
		JST	252000	
			252000 EPI	
1/21	LSP 1000		2510	1/21/2021 12:17 1/21/2021 12:17 1/21/2021 12:17
01/20	001 000		001 000	





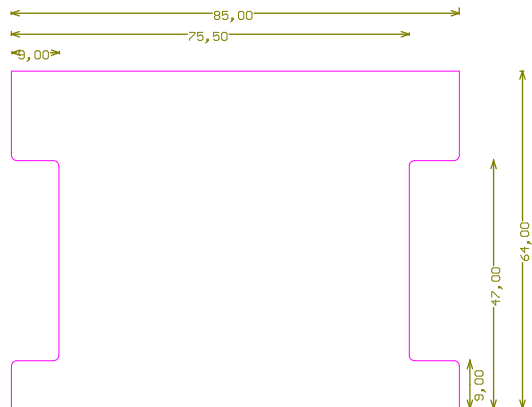
ATMEL MICROSYSTEMS
VLSI DESIGN GROUP
11-1075 1st


DESIGNER	TITLE	
PCB DESIGNER		
DATE	PART NO.	REV.
22.06.2008		
FILE NAME	DWG NO.	SCALE
Design_10000000000000000000		



NOTE 1A: DIELECTRIC FR4
2A: SURFACE PROTECTION: HASL
THE BOARD MUST BE RoHS COMPLIANT

DETAIL A (CROSS-SECTION)
SCALE = NONE



 ATMEL CORPORATION Memory Division 16-7075 Street	DESIGNER:	TITLE:	
	PCB DESIGNER:		
	DATE: 22.06.2009	PART NO:	REV:
	FILE NAME: Design_0000000000	DWG NO:	SCALE:

Display Xplained

Please attach
3M 4032 Double-sided tape
here

TAPE100

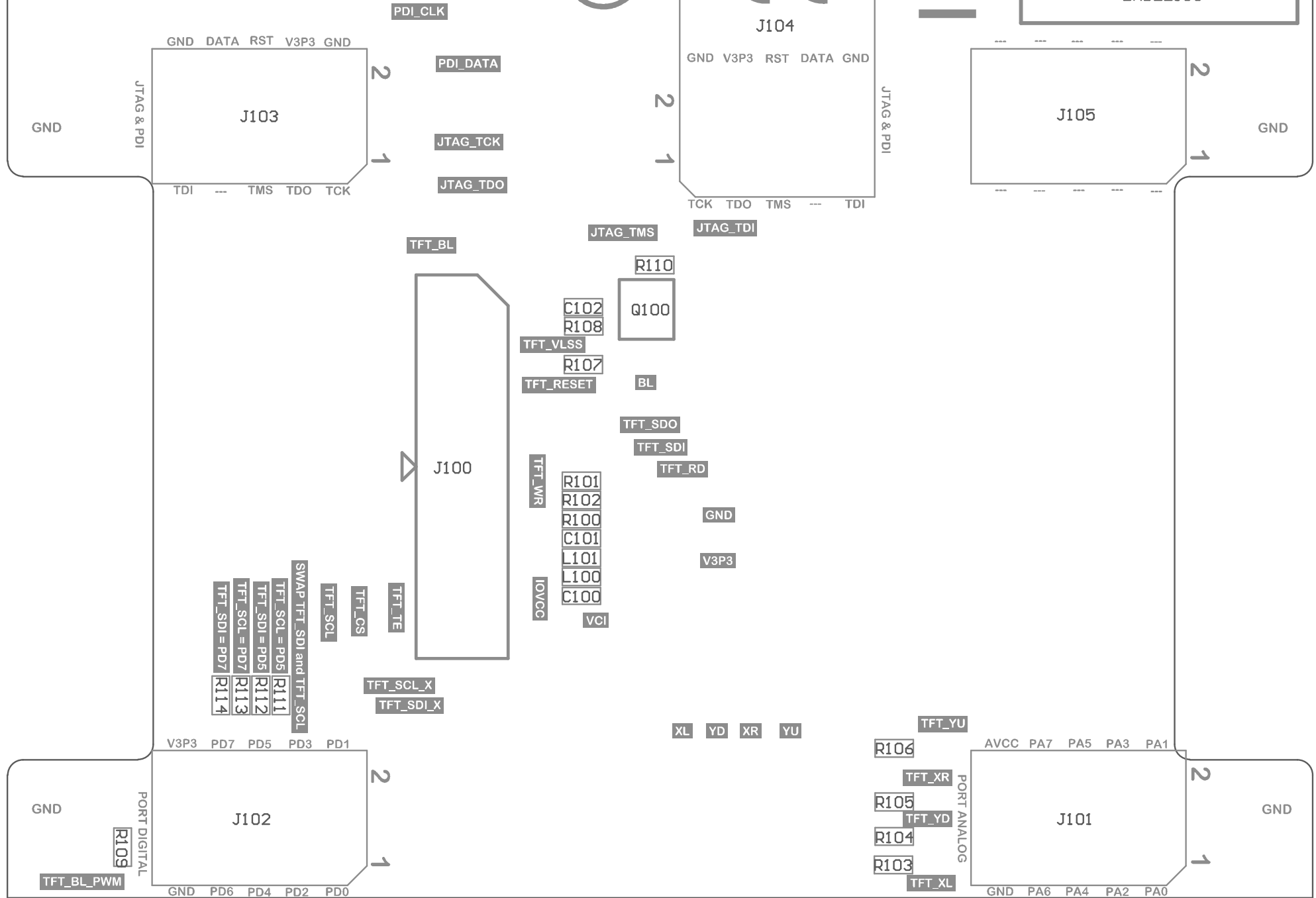
Please attach
3M 4032 Double-sided tape
here

TAPE101





PCBA LABEL
LABEL100



Display Xplained

Please attach
3M 4032 Double-sided tape
here

Please attach
3M 4032 Double-sided tape
here





PCBA LABEL

