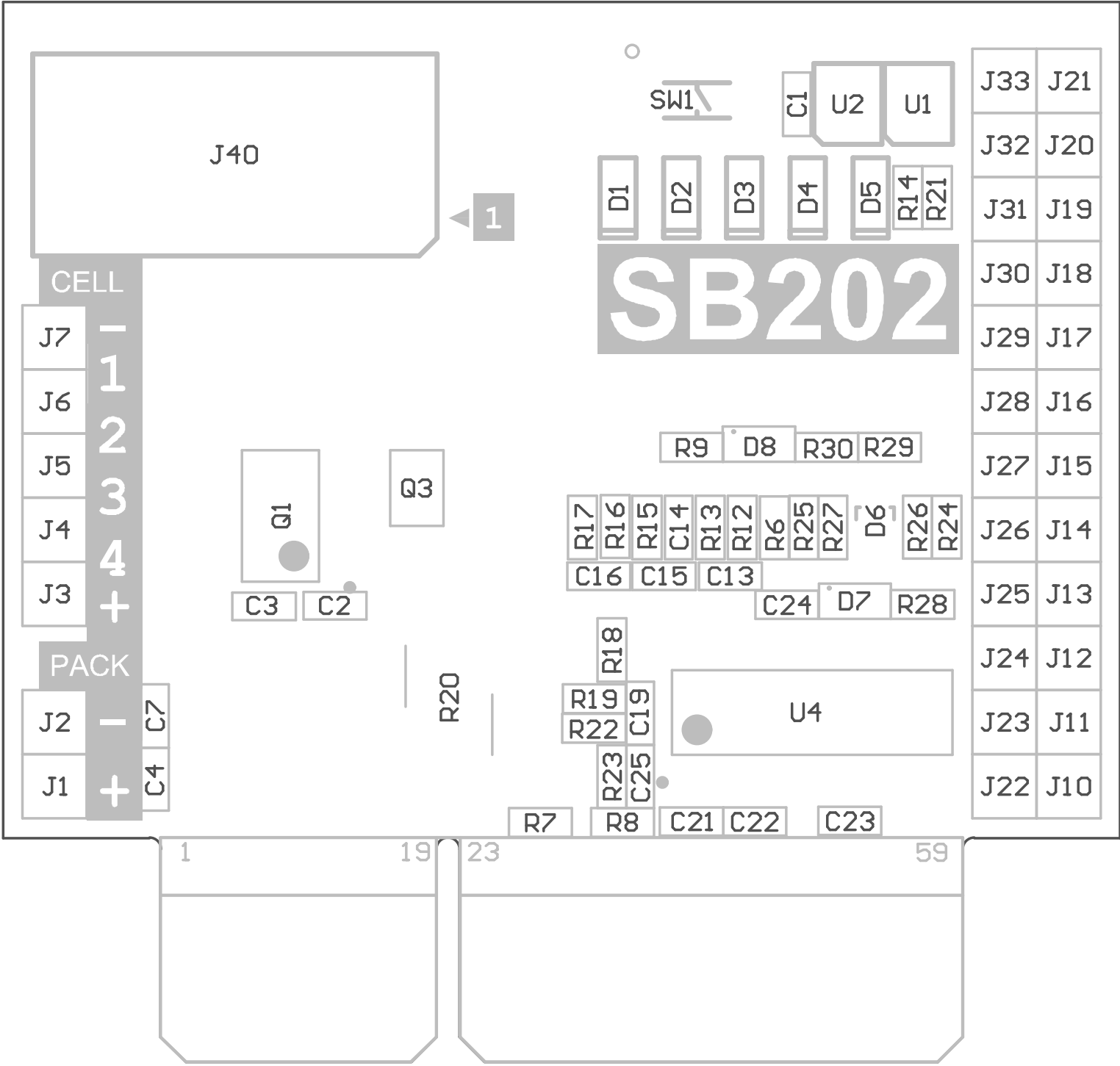


ATMEL Norway		Vestre Rosten 79	
7075 TILLER		NORWAY	
Date:	23.06.2009	15:53:10	PAGE: 1 of 1
Document number:	A08-0526 rev 1	Revision:	1
TITLE: SE202 Atmega32HVB Smart Battery 4-cell Li-Ion			
SE202_SchDoc			





J21 J33

J20 J32

J19 J31

J18 J30

J17 J29

J16 J28

J15 J27

J14 J26

J13 J25

J12 J24

J11 J23

J10 J22



Atmel Corp. © 2009
A08-0598 rev.3



J7

J6

J5

J4

J3

J2

J1

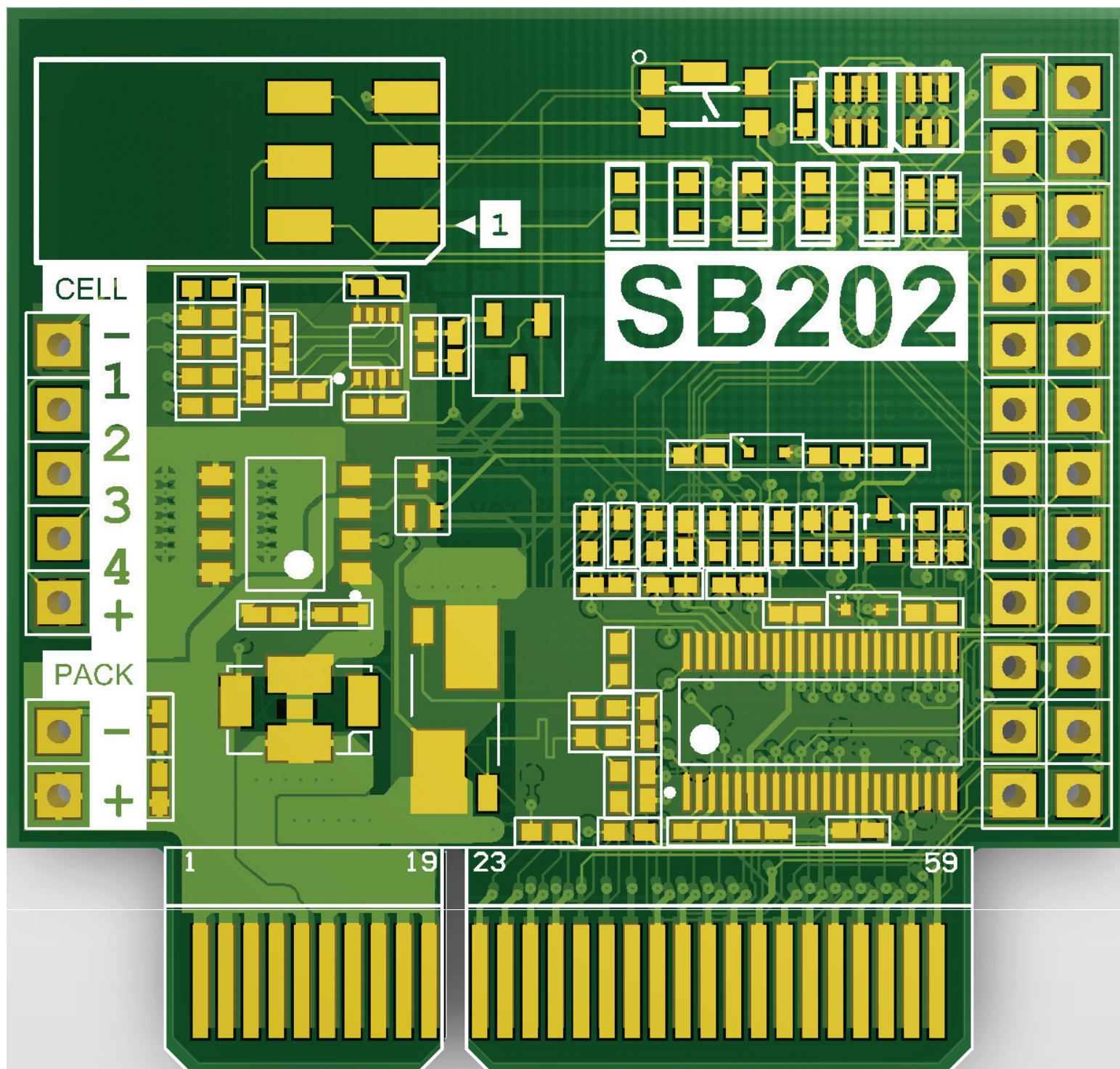
PCBA LABEL

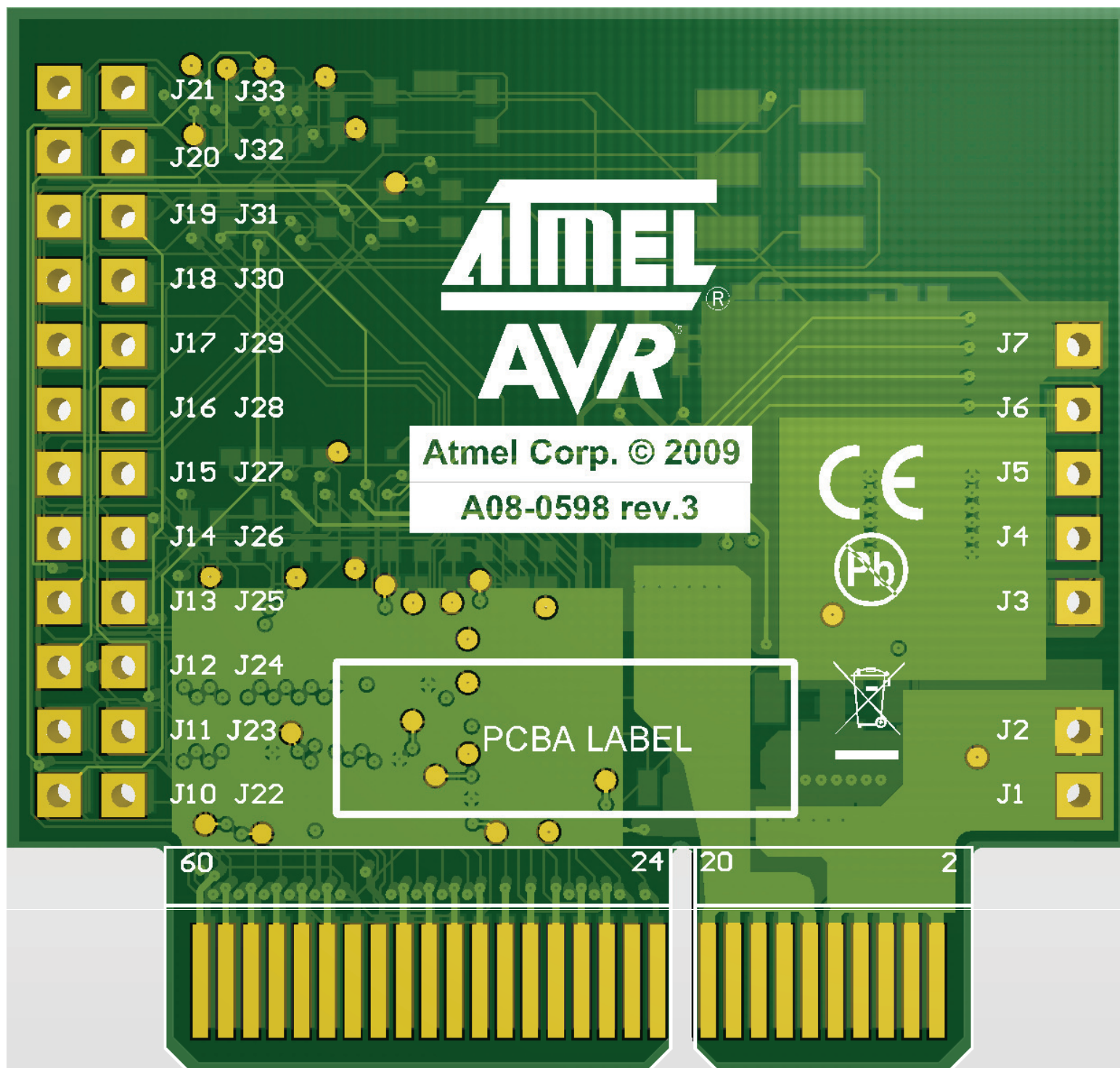
60

24

20

2





Component list

SB202 Atmega32HVB Smart Battery 4-cell L-Ion

Source Data From:

SB202_PjPCb

Project:

SB202_PjPCb

Variant:

SB202_wo_extProt

Report Date: 23.06.2009

15:53:16

Print Date: 23-Jun-09

3:53:19 PM



#	Designator	Quantity	MPN	Manufacturer	Value	Description	AN
1	C1, C2, C3, C4, C7, C13, C14, C15, C16, C19, C23, C24	12	CM402C10K4R6CTU	Kenel	100n	Ceramic capacitor, SMD 0402, X7R, 16V, 10%	A01-0046
2	C21	1	CM402C1039PAC	Kenel	1u	Ceramic capacitor, SMD 0402, X5R, 6.3V, 10%	A01-0286
3	C22	1	CM402C225M6PAC	Kenel	2.2u	Ceramic capacitor, SMD 0402, X5R, 6.3V, 20%	A01-0300
4	C26	1			22n	Ceramic capacitor, SMD 0402, X7R, 25V, 10%	A01-0033
5	D1, D2, D3, D4, D5	5	HSMA-C190	Avamp Technologies	HSMA-C190	LED, Ambient, Wave length=882nm, SMD 0611x0.7	A10-0040
6	D6	1	BZB984-CAV6	Philips	BZB984-CAV6	Zener Diode, SMD SOT-463, 5.6V, 0.45W	A04-0035
7	D7	1	BA154XV2T1G	ON Semiconductor	BA154XV2T1G	Signal Diode, 1750V, 100mA, 3V, SMD SOT-23	A04-0049
8	D8	1	MM4Z18V7T1G	ON Semiconductor	MM4Z18V7T1G	Signal Diode, 1750V, 100mA, 3V, SMD SOT-23	A04-0048
9	J40	1	TSM-103-01-T-QH-TR	SAITEC	TSM-103-01-T-QH-TR	Zener Diode, SMD SOD-523, 18.0V, 0.2W	A06-0046
10	LABEL.1	1	505462	ACT Logistics AS	Label PCB-A	PCBA Identification label PP Top White Gloss	A06-0011
11	PCB1	1	A06-0698	NCAB	A06-0698	SB202 mega32HVB board, rev 1.4, layer 5 = 33x2.06mm	A06-0698
12	Q1	1	SF8K4FU6TB	ROHM	SF8K4	Dual Nch, MOSFET, 30V, 9A continuous, 3 Pulled, RDS(ON)=0.060mOhm@VDS=4.5V, VGS(0V)=2.3V, 50mS	A05-0046
13	R2	1	S1022R	vitelby	S1022R	Thick film resistor, SMD 0402, 110kOhm, 1%	A05-0011
14	R6, R7, R8, R9, R18, R23	6			10k	Thick film resistor, SMD 0402, 110kOhm, 1%	A02-0012
15	R10, R11, R12, R13, R16, R17	5			820k	Thick film resistor, SMD 0402, 110kOhm, 1%	A02-0046
16	R20	1			100k	Thick film resistor, SMD 0402, 110kOhm, 1%	A02-0010
17	R19, R22, R24, R25	4	WSK2512S1000FEA	vitelby	WSK2512S1000FEA	Thick film resistor, SMD 0402, 110kOhm, 1%	A02-0039
18	R29	1			10k	Thick film resistor, SMD 0402, 110kOhm, 1%	A02-0039
19	R21, R28	2			2.2k	Thick film resistor, SMD 0402, 110kOhm, 1%	A02-0036
20	R26, R27	2			3.3k	Thick film resistor, SMD 0402, 110kOhm, 1%	A02-0046
21	R29	1			3.3k	Thick film resistor, SMD 0402, 110kOhm, 1%	A02-0046
22	R30	1			3.3k	Thick film resistor, SMD 0402, 110kOhm, 1%	A02-0024
23	SW1	1	MCPTG3K-V	Multicomp	MCPTG3K-V	SMD SWITCH, 2.8x3.8mm VERTICAL PUSH	A06-0000
24	U1, U2	2	NC7S257F6X-NL	Fairchild	NC7S257F6X	Configurable 2-input logic gate	A06-0185
25	U4	1					
Approved		55	Notes				