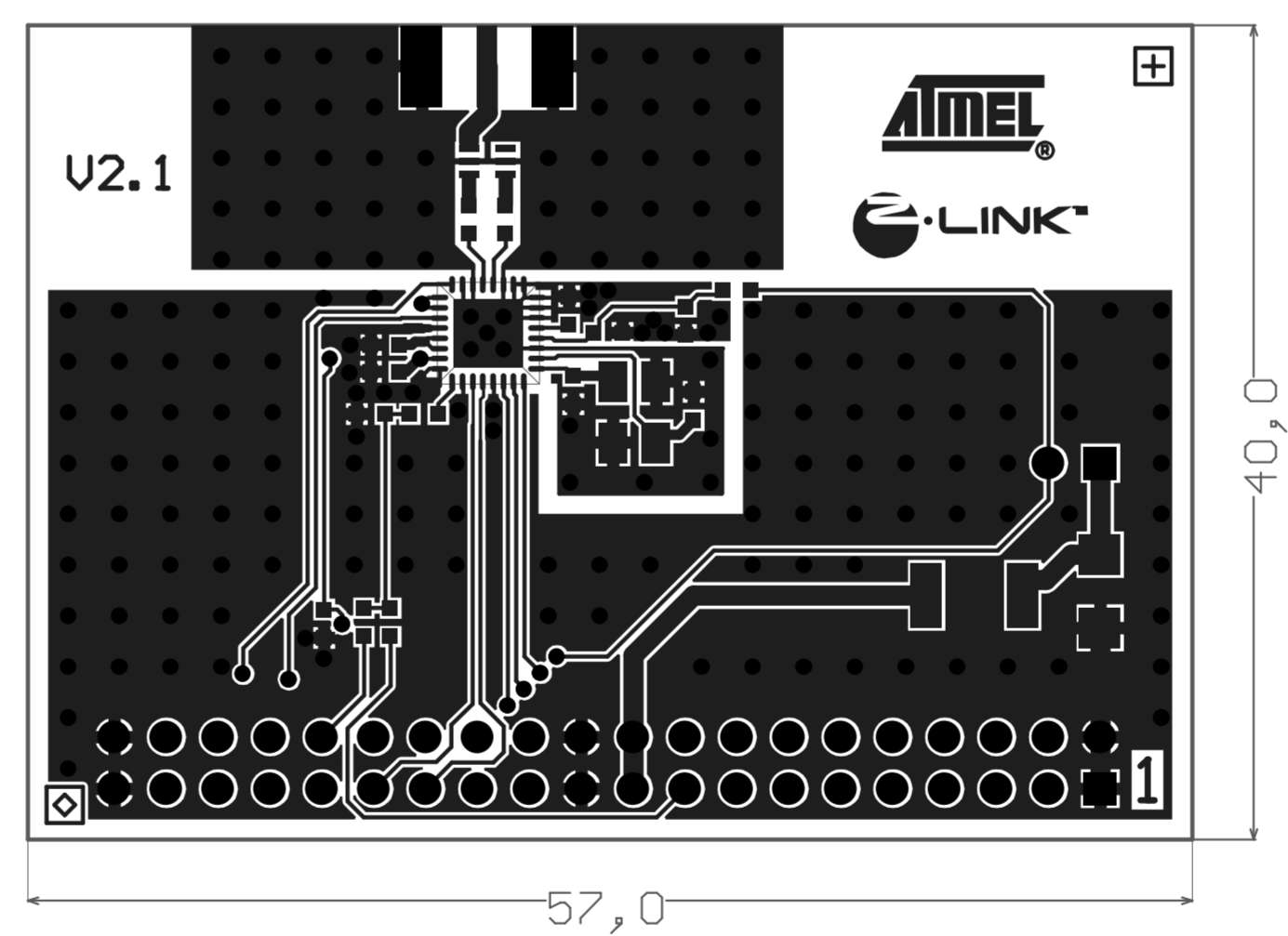


Material ISOLA DE-114 / 1.5mm
Finish - Chem. Gold
Solder Mask green
Lower Board edge milled
Left, right and upper board edge for panelization
Panelize as 10 boards
Solder mask covers via top/bottom copper, drill can be open
Paste Stencil 120um Stainless Steel
No silk screen
2 layter board with through hole contacts
Add UL marking in solder mask

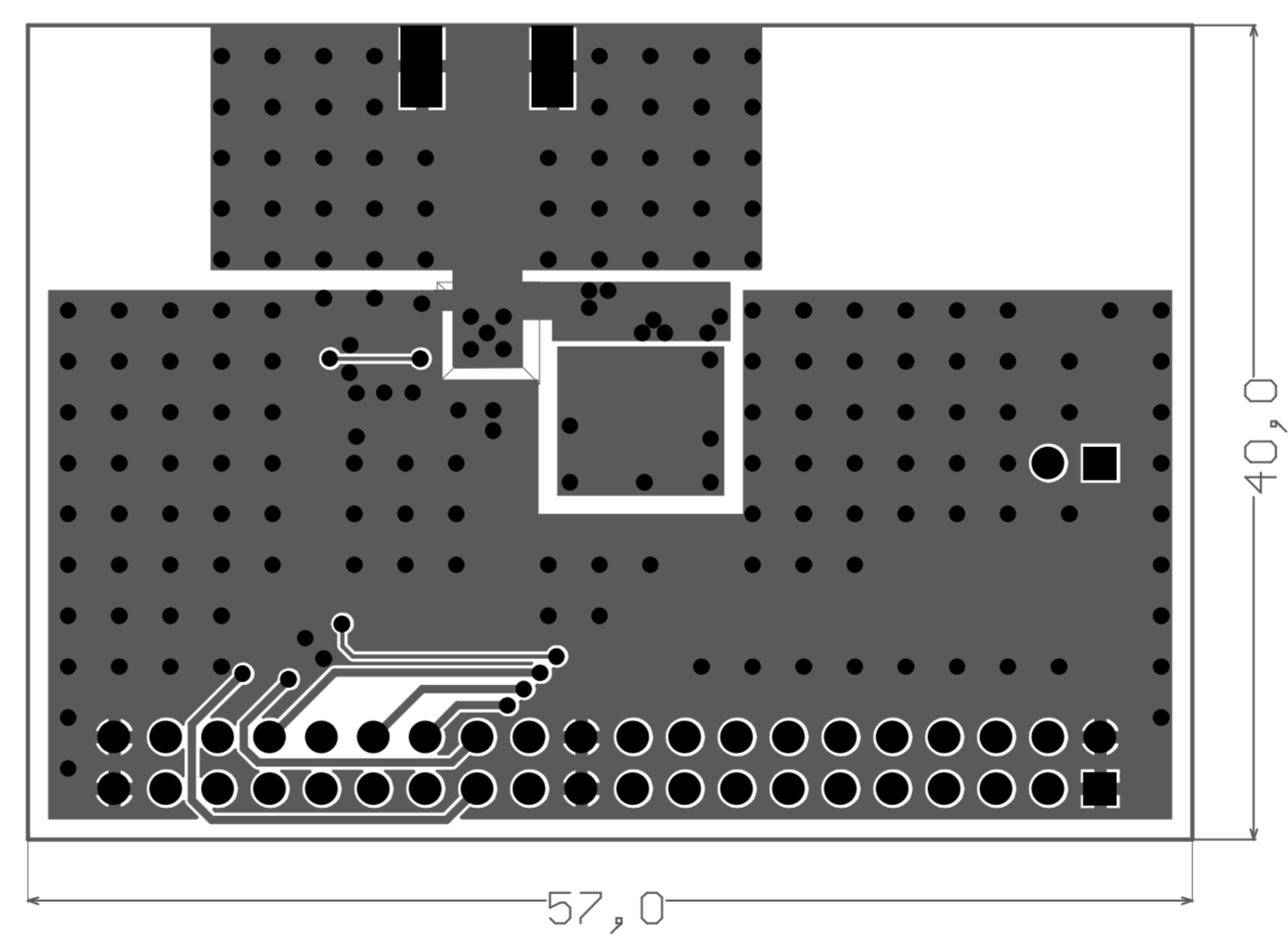


ATMEL GERMANY GMBH
Koenigsbruecker Str. 61
01099 DRESDEN
GERMANY
Date: 30.11.2006
Rev.: 2.1
Title: RZ502 Radio Board
RF230_RadioBoard_v2.1.PcbDoc

Top Layer



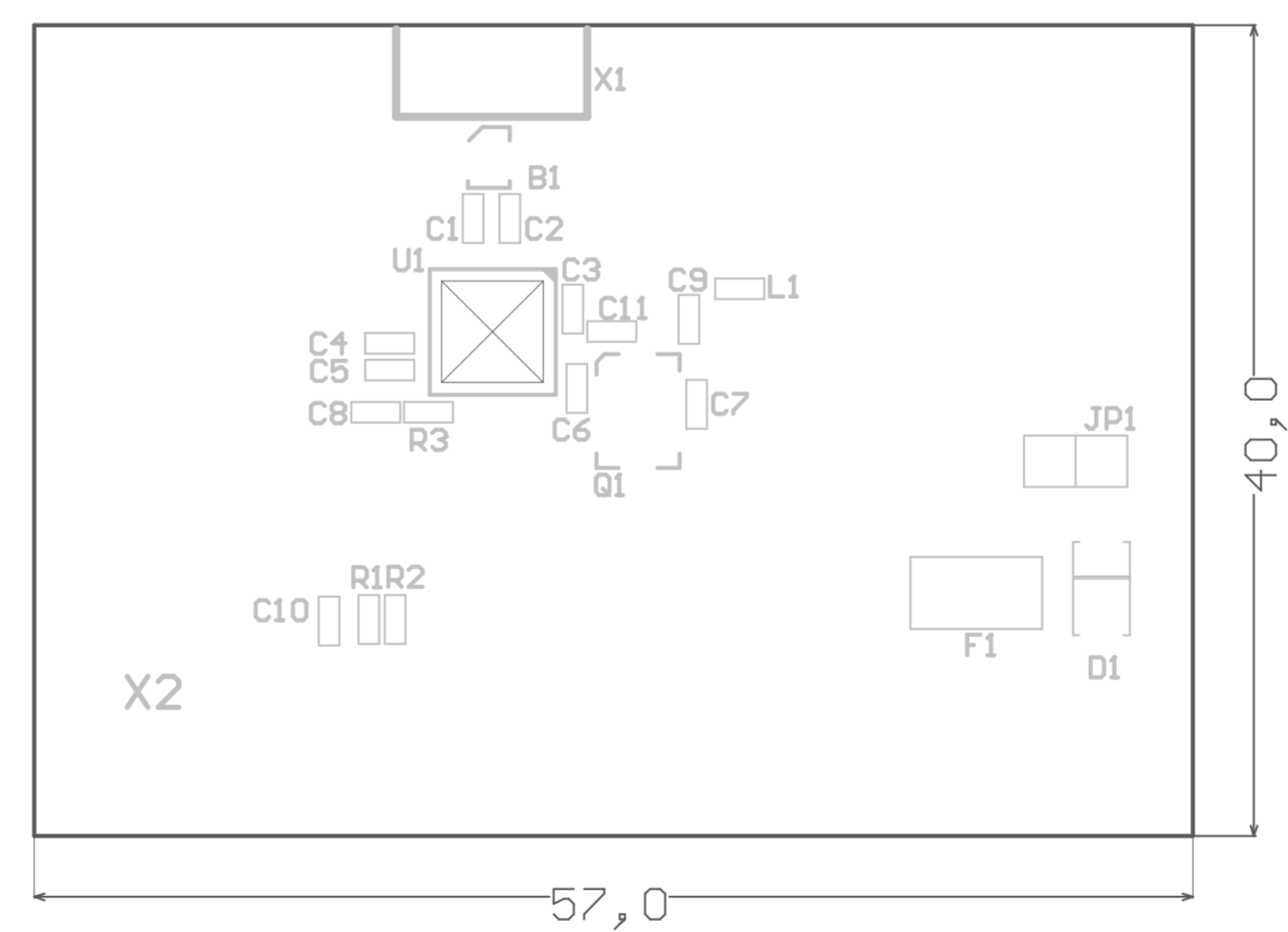
Material ISOLA DE-114 / 1.5mm
Finish - Chem. Gold
Solder Mask green
Lower Board edge milled
Left, right and upper board edge for panelization
Panelize as 10 boards
Solder mask covers via top/bottom copper, drill can be open
Paste Stencil 120um Stainless Steel
No silk screen
2 layter board with through hole contacts
Add UL marking in solder mask



ATMEL GERMANY GMBH
Koenigsbruecker Str. 61
01099 DRESDEN
GERMANY
Date: 30.11.2006
Rev.: 2.1
Title: RZ502 Radio Board
RF230_RadioBoard_v2.1.PcbDoc

Bottom Layer

Material ISOLA DE-114 / 1.5mm
Finish - Chem. Gold
Solder Mask green
Lower Board edge milled
Left, right and upper board edge for panelization
Panelize as 10 boards
Solder mask covers via top/bottom copper, drill can be open
Paste Stencil 120um Stainless Steel
No silk screen
2 layter board with through hole contacts
Add UL marking in solder mask



ATMEL GERMANY GMBH
Koenigsbruecker Str. 61
01099 DRESDEN
GERMANY
Date: 30.11.2006
Rev.: 2.1
Title: RZ502 Radio Board
RF230_RadioBoard_v2.1.PcbDoc

Top Overlay

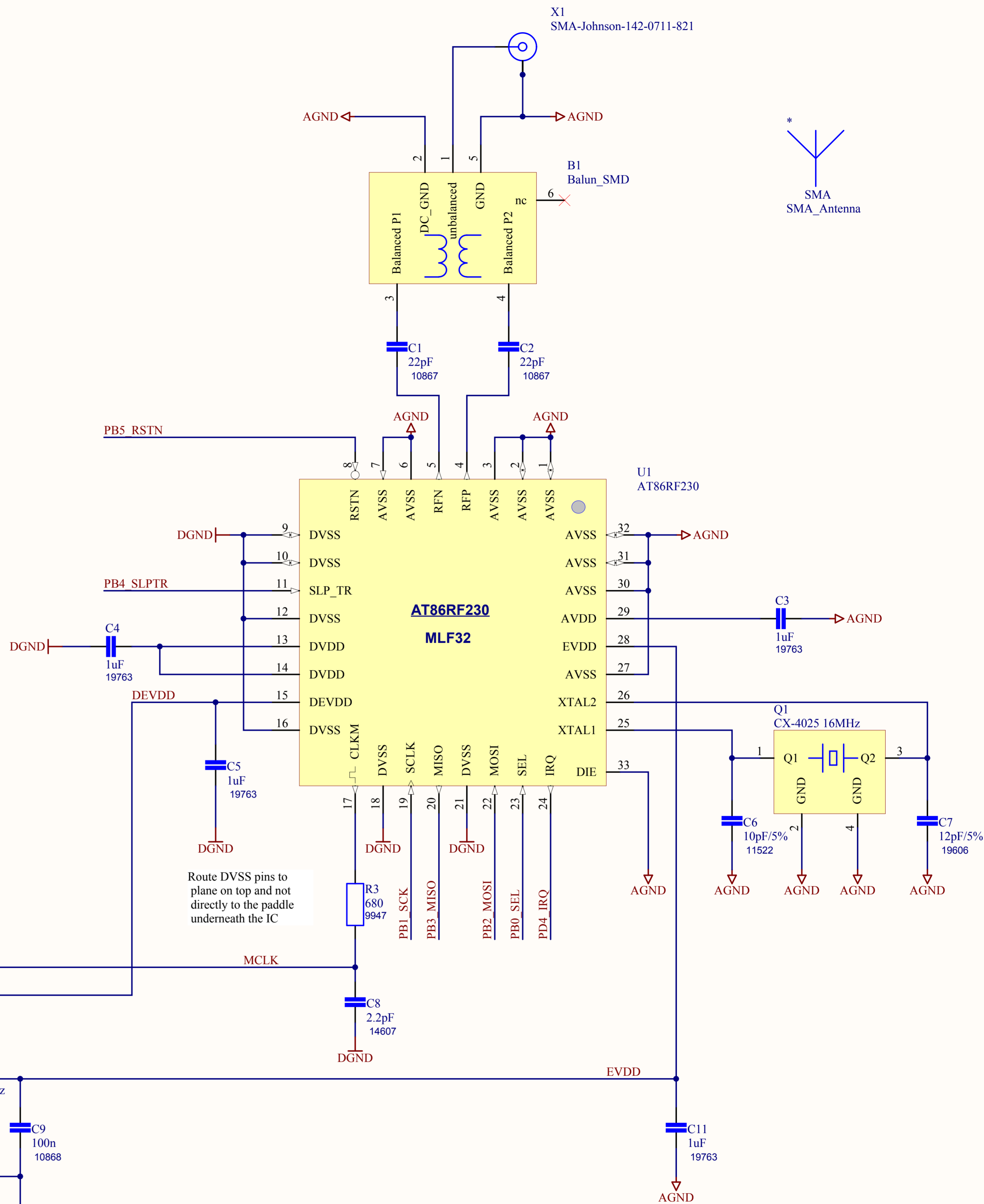
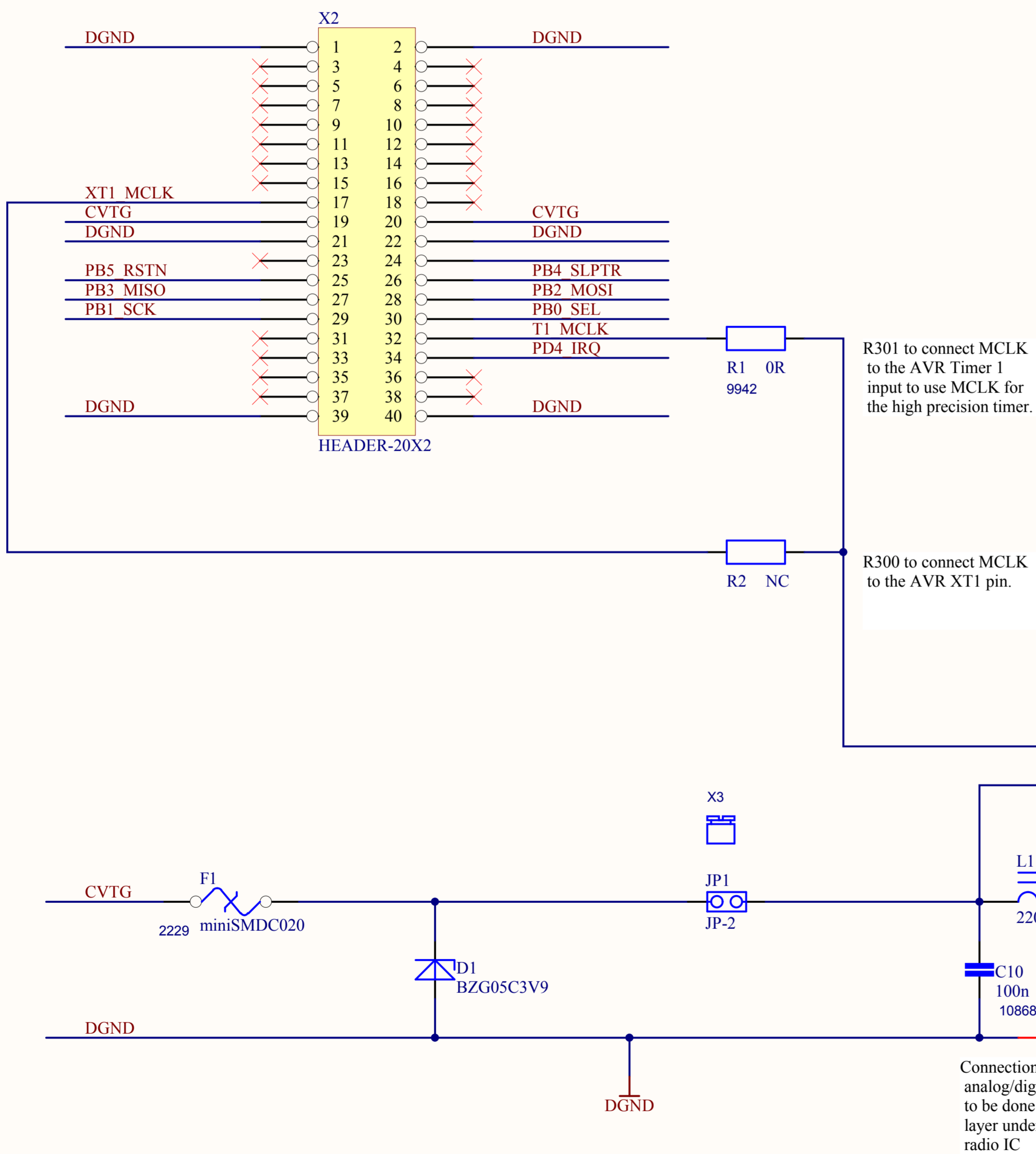


S/N
S/N1

RF1
REF1TOP

RF2
REF2TOP

STK501 - EXPAND1



ATMEL Germany GmbH
Koenigsbruecker Landstrasse 61
01099 Dresden
Germany



RZ502 Radio Board

Date: 2006-NOV-30
Revision: 2.1
Sheet 1 of 1
RF230_RadioBoard_v2.1.SchDoc