
Designing Applications with MCP16331 High-Input Voltage Buck Converter

*Author: Bogdan Anton
Microchip Technology Inc.*

INTRODUCTION

The purpose of this document is to help engineers design different low-power applications and provide insight on how simple non-synchronous buck converters can be used to develop solutions for non-typical requirements. The following paragraphs provide examples of converter applications that fulfill a variety of industry requirements.

The solutions provided by Microchip Technology Inc. highlight the use of the MCP16331 Buck (step-down) regulator, which offers the necessary flexibility required in dealing with the increasing range of technological field demands.

MCP16331 OVERVIEW

The MCP16331 is a highly-integrated, high-efficiency, fixed-frequency, step-down DC-DC converter in a popular 6-pin SOT-23 or 8-pin TDFN 2 x 3 package that operates from input voltage sources up to 50V.

Integrated features include a high-side switch, fixed frequency peak current mode control, internal compensation, peak current limit and overtemperature protection. Minimal external components are necessary to develop a complete step-down DC-DC converter power supply.

High converter efficiency is achieved by integrating the current-limited, low-resistance, high-speed N-Channel MOSFET and associated drive circuitry. High-switching frequency minimizes the size of external filtering components, resulting in a small solution size.

The MCP16331 can supply 500 mA of continuous current, while regulating the output voltage from 2.0V to 24V. An integrated, high-performance peak current mode architecture keeps the output voltage tightly regulated, even during input voltage steps and output current transient conditions that are common in power systems.

The EN input is used to turn the device ON and OFF. While OFF, only a few μA of current are consumed from the input for power shedding and load distribution applications. This pin is internally pulled up, so the device will start even if the EN pin is left floating. Output voltage is set with an external resistive divider.

The main characteristics and features include:

- Up to 96% Efficiency
- Input Voltage Range: 4.4V to 50V
- Output Voltage Range: 2.0V to 24V
- 2% Output Voltage Accuracy
- Qualification: AEC-Q100 Rev. G, Grade 1 (-40°C to +125°C)
- Integrated N-Channel Buck Switch: 600 m Ω
- Minimum 500 mA Output Current Over All Input Voltage Range
 - Up to 1.2A Output Current at 3.3V and 5V V_{OUT} , $V_{\text{IN}} > 12\text{V}$, SOT-23 package at +25°C
 - Up to 0.8A Output Current at 12V V_{OUT} , $V_{\text{IN}} > 18\text{V}$, SOT-23 package at +25°C ambient temperature
- 500 kHz Fixed Frequency
- Low Device Shutdown Current
- Peak Current Mode Control
- Internal Compensation
- Stable with Ceramic Capacitors
- Internal Soft-Start
- Internal Pull-Up on EN
- Cycle-by-Cycle Peak Current Limit
- Undervoltage Lockout (UVLO):
 - 4.1V to Start
 - 3.6V to Stop
- Overtemperature Protection
- Available Packages: 6-Lead SOT-23, 8-Lead 2x3 TDFN

For further insight and additional information, refer to the MCP16331 Data Sheet – “High-Voltage Input Integrated Switch Step-Down Regulator” (DS20005308) and the MCP16331 User’s Guide – “High-Voltage Input Buck Converter Evaluation Board” (DS50002264) available on Microchip’s website.

APPLICATIONS

Step-Down or Buck Converter

The MCP16331 is a non-synchronous, step-down or buck converter capable of stepping down input voltages, ranging from 4.4V to 50V, down to 2.0V to 24V for $V_{IN} > V_{OUT}$.

The integrated high-side switch is used to chop or modulate the input voltage using a controlled duty cycle for output voltage regulation. High efficiency is achieved by using a low-resistance switch, low forward voltage drop diode, low equivalent series resistance inductor and capacitor. When the switch is turned ON, a DC voltage is applied across the inductor ($V_{IN} - V_{OUT}$), resulting in a positive linear ramp of inductor current. When the switch turns OFF, the applied inductor voltage is equal to $-V_{OUT}$, resulting in a negative linear ramp of inductor current (ignoring the forward voltage drop of the Schottky diode).

For steady-state, continuous inductor current operation, the positive inductor current ramp must equal the negative current ramp, in magnitude. While operating in steady state, the duty cycle of the signal driving the switch must be equal to V_{OUT}/V_{IN} , for constant output voltage regulation, taking into account that the inductor current is continuous, or never reaches zero.

For discontinuous inductor current operation, the steady-state duty cycle will be less than V_{OUT}/V_{IN} , in order to maintain voltage regulation. The average of the chopped input voltage or SW node voltage is equal to the output voltage, while the average of the inductor current is equal to the output current.

The topology of the buck converter can be seen in Figure 1.

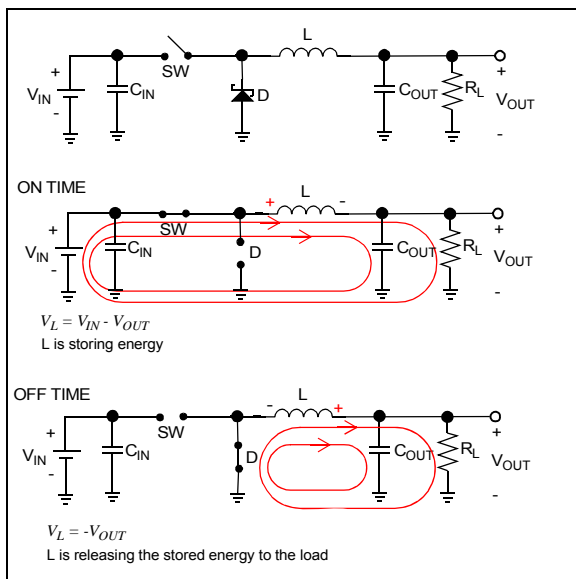


FIGURE 1: Buck Converter Topology.

A non-synchronous buck converter operates in Continuous Inductor Current mode (Figure 2) if the current through the inductor never falls to zero during the commutation cycle. Provided that the inductor current reaches zero, the non-synchronous buck converter operates in Discontinuous Inductor Current mode (Figure 3).

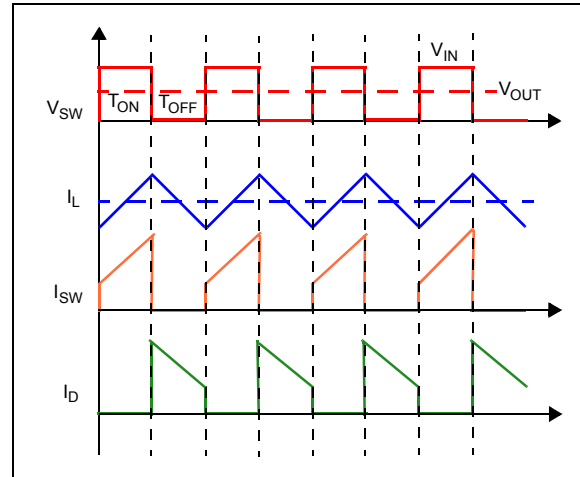


FIGURE 2: Buck Converter Continuous Conduction Mode Waveforms.

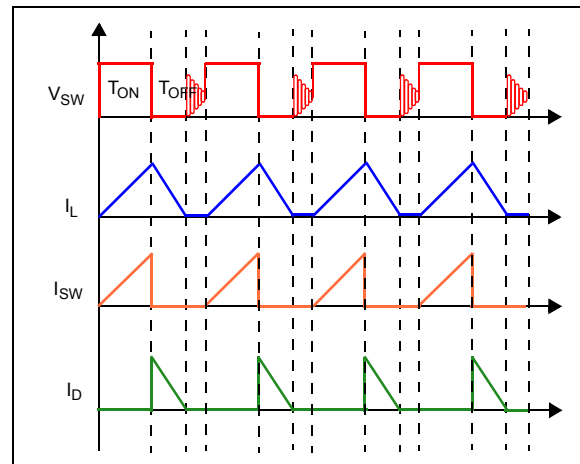


FIGURE 3: Buck Converter Discontinuous Conduction Mode Waveforms.

Figure 4 shows a typical buck converter application, using MCP16331 High Input Voltage Switcher.

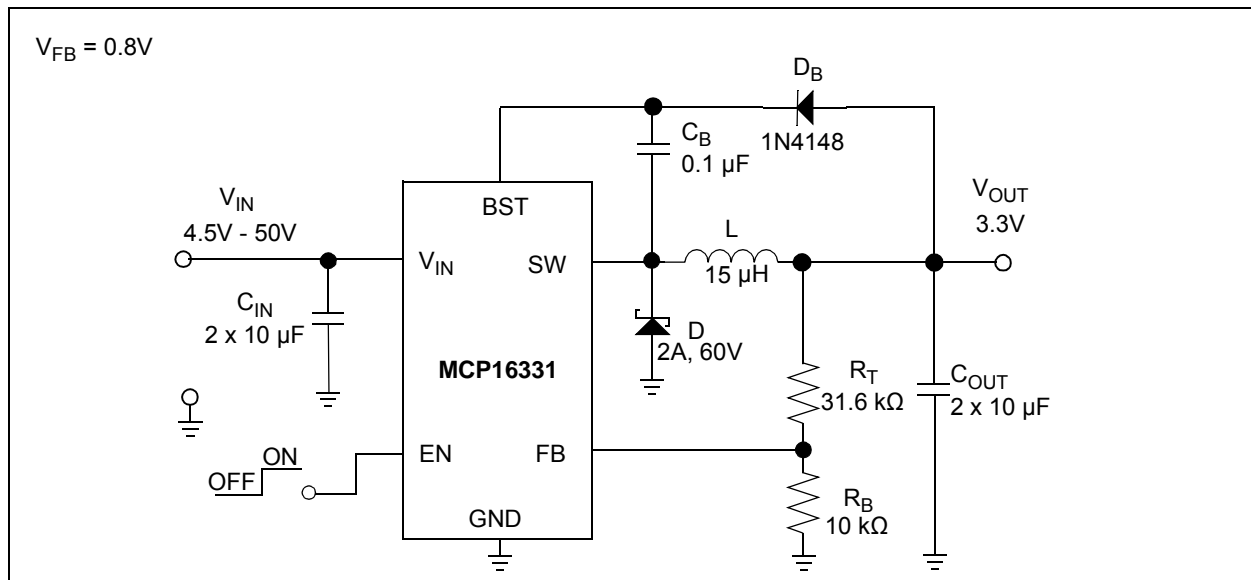


FIGURE 4: MCP16331 Typical Buck Converter Application.

APPLICATIONS

- PIC® MCU/dsPIC® DSC Microcontroller Bias Supply
- 48V, 24V and 12V Industrial Input DC-DC Conversion
- Set-Top Boxes
- DSL Cable Modems
- Automotive
- AC/DC Adapters
- SLA Battery Powered Devices
- AC-DC Digital Control Power Source
- Power Meters
- Consumer
- Medical and Health Care
- Distributed Power Supplies

ADVANTAGES

- Can be used for a large variety of applications
- Easy implementation
- Low component count
- Low price

DRAWBACKS

- This switcher cannot be easily used for other topologies.
- The device cannot be used with external MOSFETS, so there are some limitations related to the maximum operation voltage and current.

AN2102

BUCK CONVERTER POWER STAGE DESIGN

In order to build an efficient and competitive power supply that can meet the requirements and industry standards, engineers have to include in the design process the calculation of the external components, based on the input parameters and load requirements of the actual application. In order to do this, there are a few steps that have to be covered.

Tables 1 to 4 introduce all the parameters used for designing the applications presented in this document.

TABLE 1: SYSTEM PARAMETERS

Parameter	Symbol	Unit
Typical Input Voltage	V_{IN}	V
Minimum Input Voltage	V_{INmin}	V
Maximum Input Voltage	V_{INmax}	V
Output Voltage	V_{OUT}	V
Output Current	I_{OUT}	A

TABLE 2: SYSTEM COMPONENTS

Component	Designator	Unit
Inductor	L	μ H
Output Capacitor	C_{OUT}	μ F
Output Capacitor ESR	$C_{OUT,ESR}$	m Ω
Input Capacitor	C_{IN}	μ F
Rectifying Diode	V_D	mV

TABLE 3: SYSTEM BEHAVIOR

Parameter	Designator	Unit
Duty Cycle	D	%
Equivalent Output Voltage	V_{OUT}	V
Equivalent Input Current	I_{IN}	A
Maximum Duty Cycle	D_{MAX}	%
Inductor Ripple Current	I_{Lp-p}	mA
Inductor Peak Current	I_{PEAK}	A
Output Voltage Ripple	V_{OUTp-p}	mV
Output Current	I_{OUT}	mA
Estimated Efficiency	η_{est}	%

TABLE 4: CONVERTER PARAMETERS

Parameter	Designator	Unit
Switching Frequency	f_{SW}	kHz
NMOS switch ON resistance	R_{DSON}	m Ω
Feedback Voltage	V_{FB}	V

Equations 1 to 5 apply only for Continuous Conduction mode.

EQUATION 1: CALCULATING THE INPUT CURRENT

$$I_{IN} = \frac{V_{OUT} \times I_{OUT}}{V_{IN} \times \eta_{est}}$$

EQUATION 2: CALCULATING THE DUTY CYCLE

$$D = \frac{V_{OUT} + V_D}{V_{IN} - (I_{OUT} \times R_{DSON})}$$

Note 1: For minimum duty cycle, replace V_{IN} with V_{INmax} in the formula above.
2: For maximum duty cycle, replace V_{IN} with V_{INmin} in the formula above.

EQUATION 3: INDUCTOR RIPPLE CURRENT

$$I_{Lp-p} = \frac{(V_{IN} - V_{OUT}) \times D}{f_{SW} \times L}$$

EQUATION 4: INDUCTOR PEAK CURRENT

$$I_{PEAK} = I_{OUT} + \frac{I_{Lp-p}}{2}$$

EQUATION 5: OUTPUT VOLTAGE RIPPLE (APPROXIMATION)

$$V_{OUTp-p} = \frac{I_{Lp-p}}{8 \times f_{SW} \times C_{OUT}}$$

Note: Output voltage ripples due to the neglect of the output capacitance (ceramic capacitors have low ESR).

Rectifying Diode Selection

To reduce losses, Schottky diodes should be used. The forward current rating needed is equal to the maximum output current I_{OUT} . The Schottky diode must have a current rating higher than the inductor peak current limit. Also, the reverse voltage rating has to be higher than the maximum input voltage of the converter. The rectifying diode should also withstand the power dissipation, as shown in [Equation 6](#).

EQUATION 6: RECTIFYING DIODE SELECTION

$$P_D = V_F \times (1 - D) \times I_F$$

Where:

I_F = Average forward current of the rectifying diode (maximum out current)

V_F = Diode forward voltage corresponding to forward current

D = Duty Cycle

Setting the Output Voltage

To calculate the resistive divider values for the MCP16331, in order to obtain the desired output voltage, [Equation 7](#) can be used. R_T is connected between V_{OUT} and the V_{FB} pin and R_B is connected from the V_{FB} input pin to GND.

EQUATION 7: RESISTIVE DIVIDER CALCULATION

$$R_T = R_B \times \left(\frac{V_{OUT}}{V_{FB}} - 1 \right)$$

Where:

$$V_{FB} = 0.8V$$

Using high value resistors minimizes the power loss on the divider (which improves the “no load input current”, but increases the noise).

Using low value feedback resistors provides better accuracy and reduces the noise, but the power losses are higher.

A trade-off between the two cases can be done in order to provide the required V_{OUT} accuracy and also keep the “no load input current” parameter within acceptable ranges, by using [Equation 8](#).

EQUATION 8: RESISTIVE DIVIDER CURRENT

$$I_{Rdiv} = \frac{V_{FB}}{R_B}$$

Inductor Selection

The MCP16331 device features an integrated slope compensation to prevent the bimodal operation of the Pulse Width Modulator (PWM) duty cycle. Internally, half of the inductor current down slope is summed with the internal current sense signal. For the proper amount of slope compensation, it is recommended to keep the inductor down-slope current constant by varying the inductance with V_{OUT} , as shown in [Equation 9](#).

EQUATION 9:

$$K = \frac{V_{OUT}}{L}$$

Where:

$$K = 0.22V/\mu H$$

In [Table 5](#) are presented a few examples of recommended inductor values for typical output voltages, taking into account that K factor should be kept around 0.22V/ μH .

TABLE 5: RECOMMENDED INDUCTOR VALUES

Output Voltage	K	L _{STANDARD}
2.0V	0.20	10 μH
3.3V	0.22	15 μH
5V	0.23	22 μH
12V	0.21	56 μH
15V	0.22	68 μH
24V	0.24	100 μH

AN2102

MCP16331 Multiple Outputs Buck Converter

In many applications, two or more voltage rails are needed, some of them being galvanically isolated. This kind of task can be accomplished relatively easily, by using the MCP16331 in a multiple outputs buck converter, as shown in Figure 6. Figure 5 reveals a design example that can be implemented for such a request.

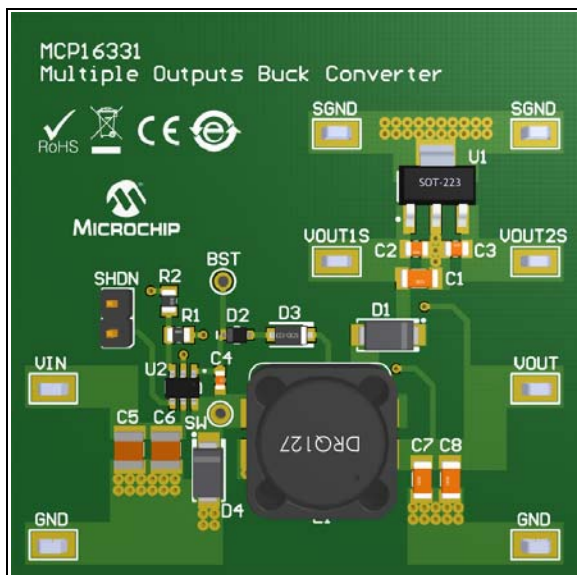


FIGURE 5: MCP16331 Multiple Outputs Buck Converter Design Example.

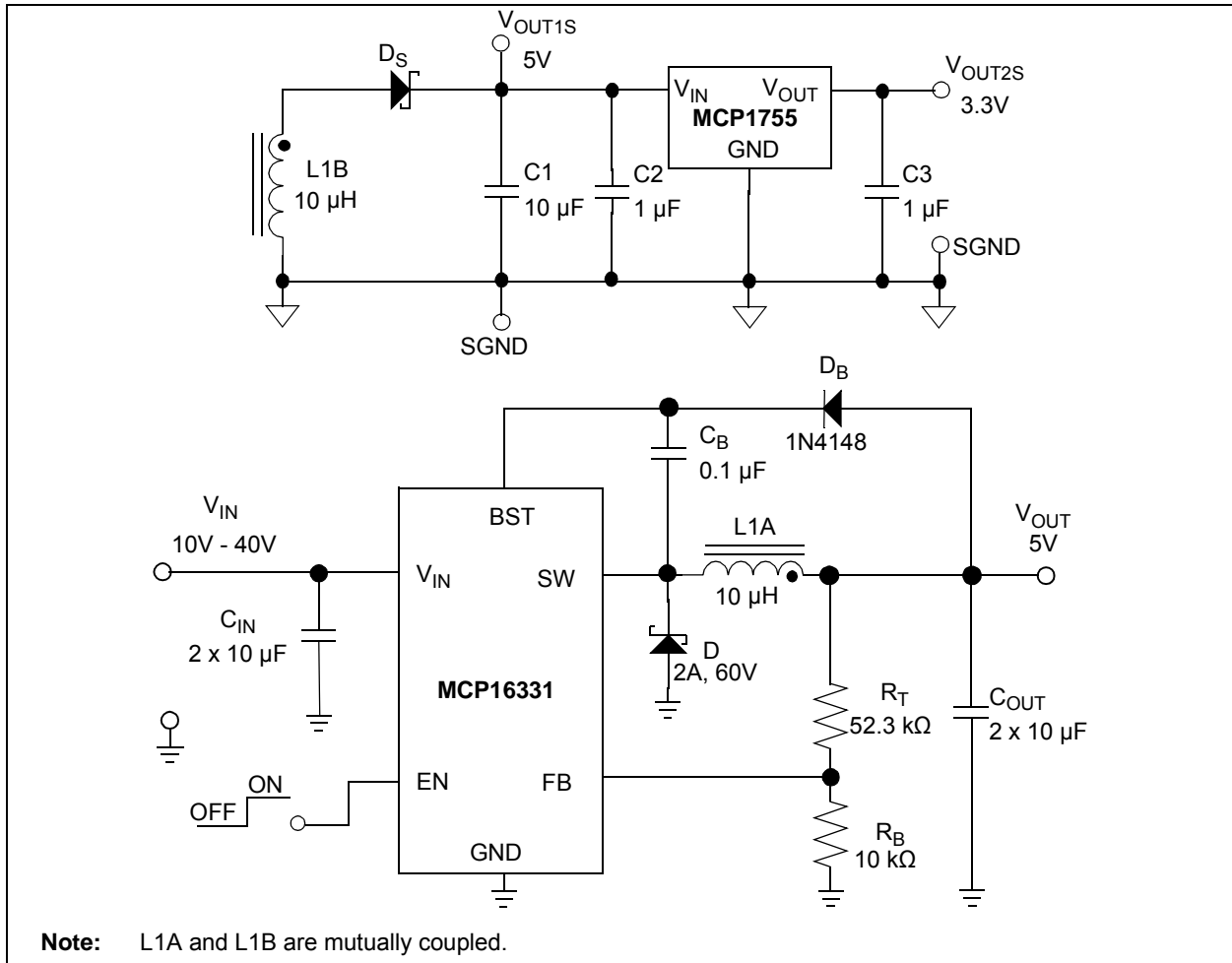


FIGURE 6: Multiple Outputs Buck Converter Example.

AN2102

FEATURES

- Input Voltage Range: 4.5V to 50V
- Three Outputs (two of them are galvanically isolated from the third one)
- Output Current Capability (10V to 40V input voltage):
 - Up to 400 mA (@ $V_{OUT} = 5V$)
 - Up to 200 mA - combined (@ $V_{OUT1S} = 5V$; $V_{OUT2S} = 3.3V$)
- Switching Frequency: 500 kHz
- Load Regulation: $\leq 5\%$

ADVANTAGES

- Multiple outputs
- Galvanic isolation between outputs

DRAWBACKS

- Needs balancing resistors for keeping the voltage regulation between the outputs
- All the outputs must be charged almost equally when using at least one of them

MULTIPLE OUTPUTS BUCK CONVERTER DESIGN STAGE

Instead of using one chip for each output voltage, the inductor from the typical buck topology was replaced with a 1:1 coupled inductor. By doing this, there are two advantages: one is that an extra output was added to the converter and the second one is that the output has galvanic isolation with respect to the main output. In addition to this, an LDO (Low drop-out voltage regulator) or a linear voltage regulator can be cascaded, as is shown in [Figure 6](#), if the application requires smooth voltage regulation or an extra output.

Consider having a perfect coupled inductor, with each inductor having the same number of windings on a single core, the mutual inductance splits the ripple current equally between the two coupled inductors.

By using a real coupled inductor, the coils do not have equal inductance and the ripple currents will not be exactly the same. Thus, for a desired ripple-current value, the inductance required in a coupled inductor is estimated to be half of what would be needed if there were two separate inductors, as shown in [Equation 10](#).

EQUATION 10:

$$L_{IAmin} = L_{IBmin} = \frac{1}{2} \times \frac{V_{INmin} \times D_{max}}{I_{Llp-p} \times f_{SW}}$$

The accepted ripple current will be chosen to be 30% of the inductor current, both for good transient response and electromagnetic interference (EMI) considerations. For a simpler approach, when choosing the inductor, the values from [Table 5](#) can be used as a reference point, with the remark that they should be halved, for this kind of application.

However, some limitations must be taken into account when using this topology, because there are also drawbacks, regarding the efficiency, voltage difference between outputs, load regulation and so on. Having a 1:1 coupled inductor means that the voltage in the secondary side has almost the same value of the voltage in the primary side and the output voltage of the LDO is lower than each of them.

The most important conditions that should be met, in order to have a functional converter, with a load regulation $\leq 5\%$ are:

- $I_{OUT} > (I_{OUT1S} + I_{OUT2S})$
- $(I_{OUT1S} + I_{OUT2S}) > 10 \text{ mA}$

Where:

- I_{OUT} is the current drawn from V_{OUT}
- I_{OUT1S} is the current drawn from V_{OUT1S}
- I_{OUT2S} is the current drawn from V_{OUT2S}

The primary output voltage equation is identical to a buck converter and is given by [Equation 11](#).

EQUATION 11:

$$V_{OUT} = D \times V_{IN}$$

The secondary output voltage, for a 1:1 inductor ratio, is given by [Equation 12](#).

EQUATION 12:

$$V_{OUT1S} = V_{OUT} - V_F$$

V_F is the forward voltage drop of the rectifying diode from the secondary side. The secondary output (V_{OUT1S}) closely tracks the primary output voltage (V_{OUT}), without the need for additional transformer winding or an optocoupler for feedback.

The peak inductor and switch current during ON-time is given by [Equation 13](#).

EQUATION 13:

$$I_{PEAK} = I_{LIA} + I_{LIB} + \frac{I_{LIAp-p} + I_{LIBp-p}}{2}$$

Since there is no current in the secondary side during T_{ON} , the peak current will be shown in Equation 14.

EQUATION 14:

$$I_{PEAK} = I_{OUT} + I_{OUT1S} + I_{OUT2S} + \frac{I_{L1\Delta P-P}}{2}$$

For a better voltage regulation in the secondary side of the converter, an MCP1755 LDO was added, which also provides another output (V_{OUT2S}). Thus, the overall efficiency is pretty high, due to the small difference between V_{OUT1S} and V_{OUT2S} .

MCP16331 Non-Inverting Buck-Boost Converter

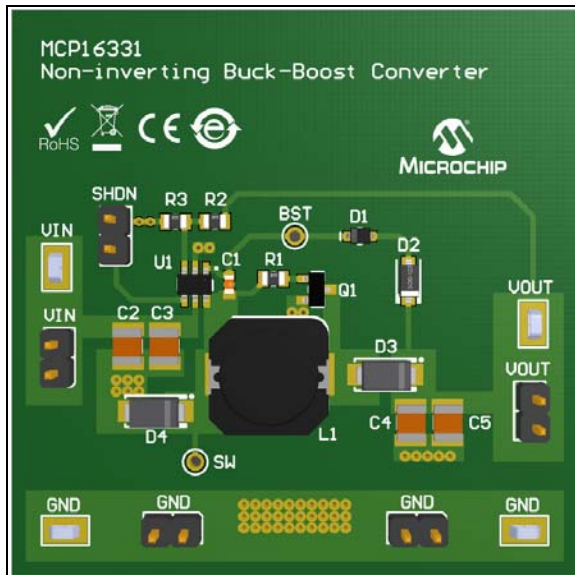


FIGURE 7: MCP16331 Non-Inverting Buck Converter Design Example.

There are several applications (especially in the automotive industry) that require a stable output voltage, obtained from either a lower or a higher input voltage. Regarding this, there are several topologies that can be implemented, both with advantages and drawbacks. Figure 9 shows an example of a non-inverting buck-boost converter, using the MCP16331 buck switcher. For a possible implementation of this topology, please refer to Figure 7.

A conventional non-inverting buck-boost converter uses a single inductor (Figure 9), but it has an additional MOSFET (Q1) and an additional diode (D2), compared to an inverting buck-boost converter. By turning the internal switch and Q1 ON and OFF simultaneously, the converter operates in Buck-Boost mode, and the duty cycle also complies with Equation 15. The ideal waveforms of a non-inverting buck-boost converter operating in Buck-Boost mode and CCM are

shown in Figure 8. The internal switch and D1 both see a voltage stress of V_{IN} , while Q1 and D2 both see a voltage stress of V_{OUT} .

The internal switch, Q1, D1, D2 and L all see a current stress of $I_{IN} + I_{OUT}$ with inductor ripple current neglected. The relatively large number of power devices and high-current stress in Buck-Boost mode prevent the converter from being very efficient.

The non-inverting buck-boost converter is a cascaded combination of a buck converter followed by a boost converter, the internal switch and Q1 having identical gate-control signals.

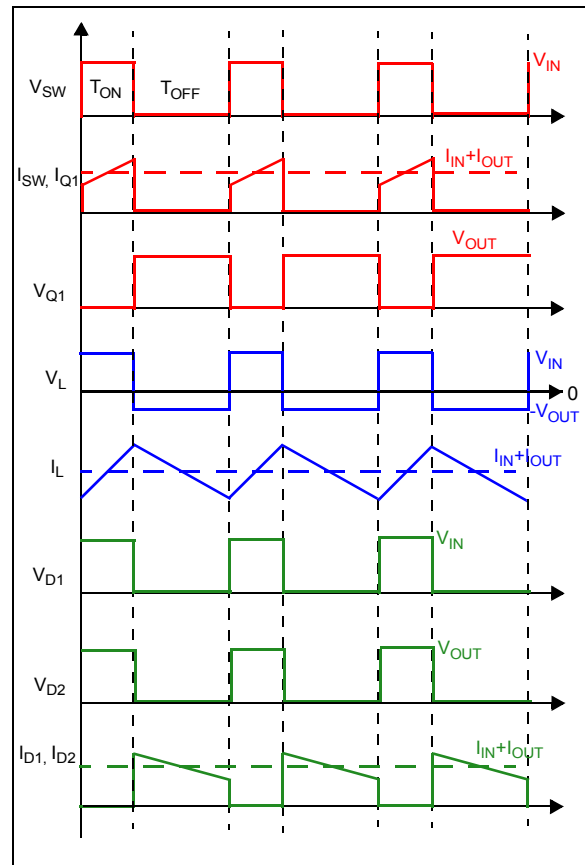


FIGURE 8: MCP16331 Non-Inverting Buck-Boost Converter Waveforms in CCM.

AN2102

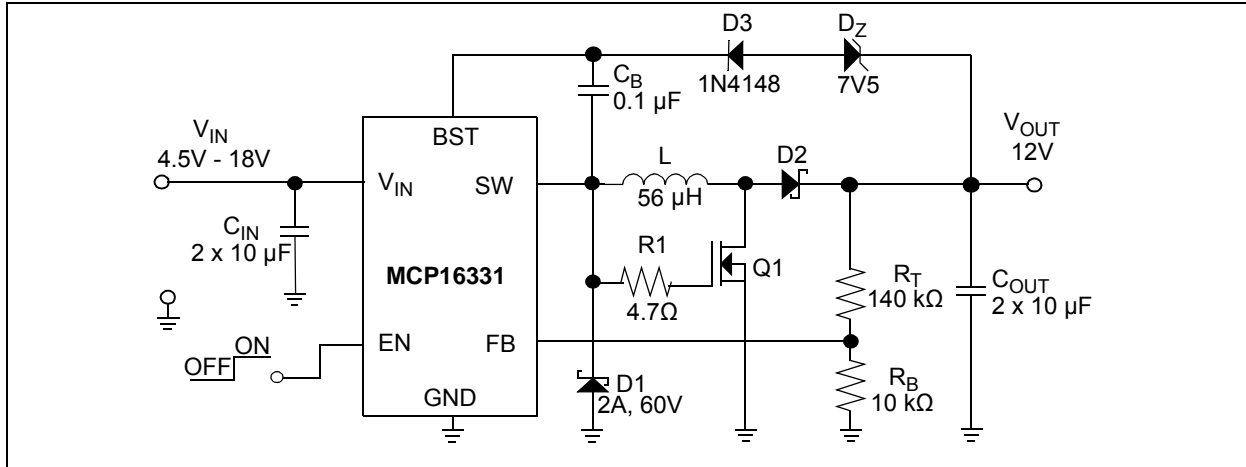


FIGURE 9: MCP16331 Non-Inverting Buck-Boost Converter.

FEATURES

- Input Voltage Range: 4.5V to 18V
- Output Voltage Range (Up to 24V)
- Output Current Capability (9V to 16V input voltage):
 - Up to 500 mA (@ $V_{OUT} = 12V$)
- Switching Frequency: 500 kHz

ADVANTAGES

- Same polarity with respect to V_{IN}
- Single inductor
- No additional control circuitry

DRAWBACKS

- Because Q1 is driven directly from the SW pin, a maximum input voltage of 18V can be used, to avoid damaging transistor's gate.
- For higher input voltages, an additional MOSFET driver can be used to command Q1.

NON-INVERTING BUCK-BOOST CONVERTER DESIGN STAGE

Equations 15 to 21 can be used to calculate the non-inverting buck-boost converter application parameters and inductor's value. Note that the given equations apply for Continuous Conduction mode operation only.

EQUATION 15: DUTY CYCLE

$$D = \frac{V_{OUT} + 2 \times V_D}{V_{IN} + V_{OUT} + 2 \times V_D}$$

EQUATION 16:

$$D_{max} = \frac{V_{OUT} + 2 \times V_D}{V_{INmin} + V_{OUT} + 2 \times V_D}$$

The duty cycle of the non-inverting buck-boost converter can be calculated with the equations above. At minimum input voltage (V_{INmin}), the duty cycle has the maximum value. At maximum input voltage (V_{INmax}), the duty cycle has the minimum value.

EQUATION 17: EQUIVALENT INPUT CURRENT

$$I_{IN} = \frac{V_{OUT} \times I_{OUT}}{V_{IN} \times \eta_{est}}$$

EQUATION 18:

$$I_{INmax} = \frac{V_{OUT} \times I_{OUT}}{V_{INmin} \times \eta_{est}}$$

For non-inverting buck-boost converter, the DC current flowing through L is the sum of input current and output current. The maximum input current (keeping the load and output voltage constant) is at the V_{INmin} , as shown in Equation 18.

EQUATION 19: INDUCTOR RIPPLE CURRENT

$$I_{Lp-p} = (I_{IN} + I_{OUT}) \times k$$

Note 1: k takes values between 0.2 to 0.4.

2: k represents a percentage of the inductor current.

The inductor ripple current represents a percentage of the DC current. Depending on the application, this percentage usually represents 20% to 40%. The higher the ripple (coefficient k is higher), the lower the inductor value. The output current capabilities will be lower, as the current ripple will reach the peak current limitation sooner. For lower k coefficient values, the inductor will be higher. The output current will increase as the ripple will be lower requiring more load to hit the current limit. As a result of higher output current, the power dissipation of the device has to be taken into consideration. The converter may enter thermal shutdown before reaching the peak current limit. The requirements of the application will determine the acceptable inductor current ripple range. However, as MCP16331 is a peak current mode control converter, it requires a significant inductor ripple current in order to provide the best transient response. Usually, a $k = 30\%$ is a good trade-off between current capabilities and dynamic response.

The inductor's peak current is dependent on the following parameters, as shown in [Equation 20](#):

EQUATION 20: INDUCTOR PEAK CURRENT

$$I_{Lpeak} = I_{IN} + I_{OUT} + \frac{I_{Lp-p}}{2}$$

- Converter's input current
- Converter's output current
- The inductor current ripple which is designed to meet the application requirements

During the design phase, the efficiency of the converter is estimated, in order to simplify all the calculations. The real application results may differ to a small extent, influenced by the component/system tolerances and accuracy of the estimated parameters.

EQUATION 21: INDUCTOR VALUE

$$L = \frac{(V_{IN} + V_{OUT}) \times D_{max}}{I_{Lp-p} \times f_{SW}}$$

The value of the inductor can be calculated using [Equation 21](#), but for a more simple way to design an application like this, the values from [Table 5](#) can be used.

High Inductor Current Ripple

- Advantages
 - Lower inductor value required, lowering application's necessary board space, decreasing overall costs
 - Better dynamic response
- Disadvantages
 - Lower output current capabilities
 - Increased EMI (electromagnetic interference), requiring additional output capacitance

Low Inductor Current Ripple

- Advantages
 - Higher output current capabilities
 - Decreased EMI
- Disadvantages
 - Increased inductor value, bigger package/board size, increased costs
 - Higher thermal stress
 - Slower dynamic response

MCP16331 Inverting Buck-Boost Converter

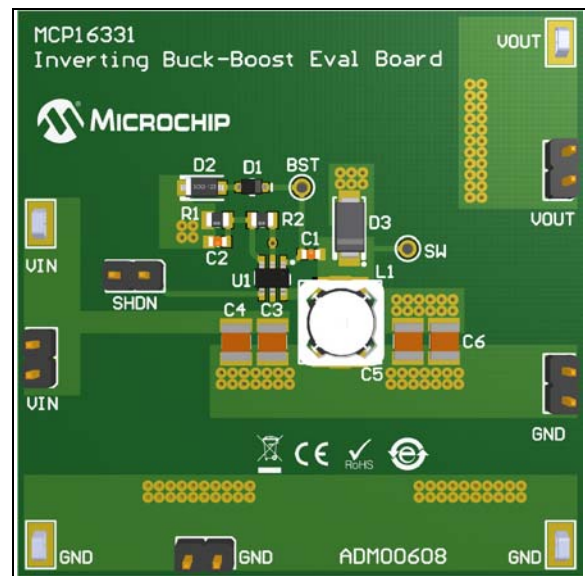


FIGURE 10: MCP16331 Inverting Buck Converter Design Example.

Besides the non-inverting buck-boost converter, generating a negative output voltage from a positive input voltage can be useful, especially for supplying amplifiers. In this case, an inverting buck-boost converter can be implemented, using MCP16331, as shown in [Figure 12](#). This application shows the possibility of using a buck switcher in an inverting buck-boost topology. An example of a possible PCB layout implementation of this converter is shown in [Figure 10](#).

Figure 12 shows that the inductor is connected between SW pin and GND, the anode of the freewheeling diode is connected to V_{OUT} and its cathode is tied to SW, just like in a regular inverting buck-boost configuration.

During operation, when the internal switch is turned ON, the voltage across the inductor is V_{IN} , so the entire load current is supplied by the energy stored in the output capacitor. When the internal switch is turned OFF, the inductor reverses polarity to keep the inductor's current continuous, so the voltage across the inductor is approximately V_{OUT} . While the switch is turned OFF, the inductor supplies current both to the load and to the output capacitor. The waveforms for steady-state, continuous inductor current operation, are shown in Figure 11.

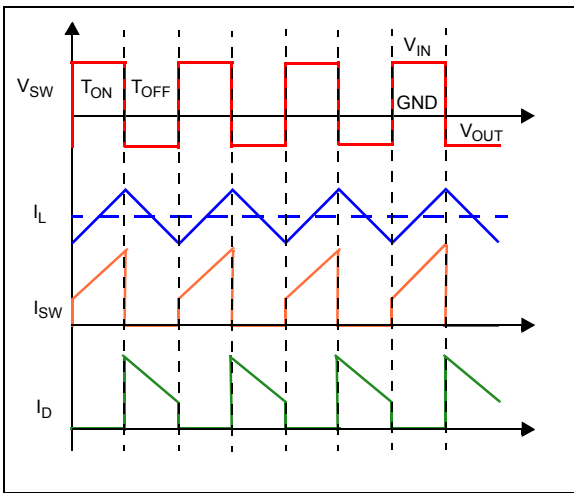


FIGURE 11: MCP16331 Inverting Buck-Boost Converter Waveforms in CCM.

To use the MCP16331 buck switcher in a non-inverting buck-boost topology, the GND pin should be tied to V_{OUT} , so the output capacitor will have the higher voltage potential at GND.

The voltage between the device's V_{IN} pin and GND is $V_{IN} - (-V_{OUT})$, instead of V_{IN} , as in the buck converter, so the following condition (see Equation 22) should be taken into account when designing such an application.

EQUATION 22:

$$(V_{IN} + |V_{OUT}|) < 50V$$

Thus, for enabling/disabling the device, the same voltage should be applied on EN pin.

For calculating the duty cycle, Equation 23 can be used (considering the electronic components used are ideal).

EQUATION 23:

$$D = \frac{V_{OUT}}{V_{OUT} - V_{IN}}$$

The peak current in the inductor will be calculated as shown in Equation 24.

EQUATION 24:

$$I_{Lpeak} = \frac{I_{OUT}}{1-D} + \frac{I_{Lp-p}}{2}$$

For the minimum inductor value, refer to the recommended inductor values in Table 5.

In conclusion, MCP16331 can be used to generate a negative output from a positive voltage source, if the circuit is configured as an inverting buck-boost, but, it must be acknowledged that the GND pin of the switcher should not be tied to the ground of the entire system.

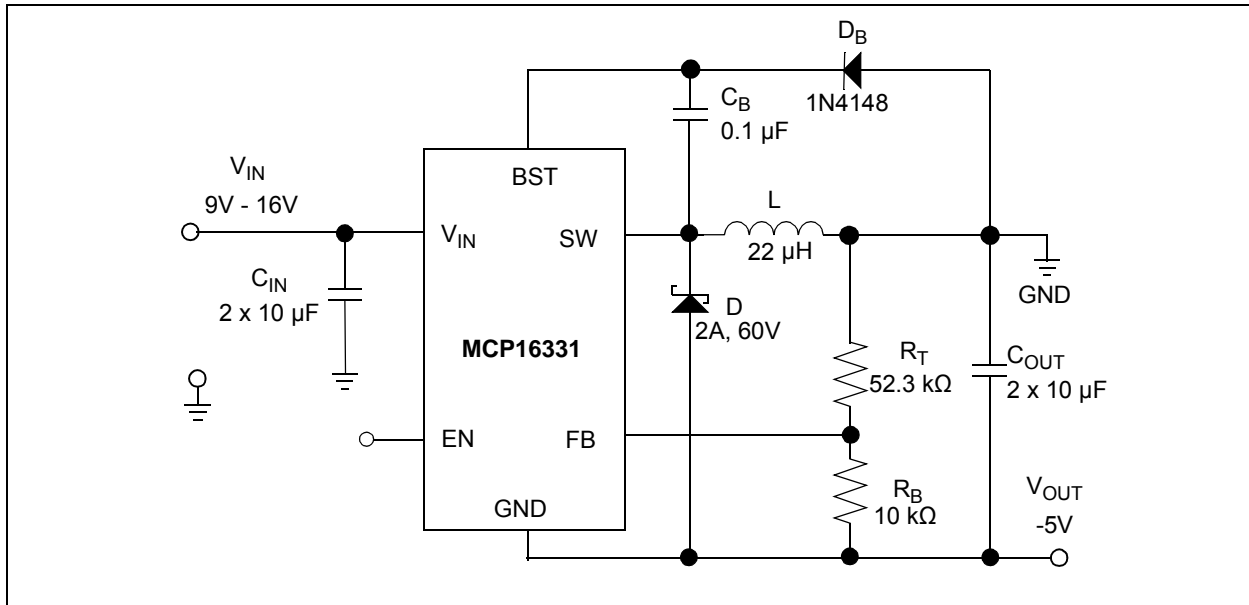


FIGURE 12: MCP16331 Inverting Buck-Boost Application.

FEATURES

- Input Voltage Range: 4.5V to 48V
- Output Voltage Range: up to -24V (inverting)
- Output Current Capability (9V to 16V input voltage):
 - Up to 500 mA (@ $V_{OUT} = -5V$)
- Switching Frequency: 500 kHz

ADVANTAGES

- Can be used for applications in which the input voltage is either higher or lower than the output voltage (without taking into account the polarity of the output voltage)
- Negative polarity with respect to V_{IN}
- Simple implementation, with minimum of components

DRAWBACKS

- The maximum input voltage capability is affected by the output voltage of the converter.

CONCLUSION

This document is a brief introduction into a different way of thinking how to develop a simple and inexpensive solution for various requirements, rather than focusing on obvious approaches.

MCP16331 is a highly-integrated DC-DC converter, designed for step-down regulation, which can be used to develop non-typical applications, such as Multiple Outputs Buck Converter, Inverting or Non-Inverting Buck Converter, with minimal changes within the typical schematic.

However, for each application, there are some limitations and conditions that must be taken into account for a good functionality.

Overall, the information presented here aims to help engineers in designing clever solutions, mainly for applications that require high input voltages.

Note the following details of the code protection feature on Microchip devices:

- Microchip products meet the specification contained in their particular Microchip Data Sheet.
- Microchip believes that its family of products is one of the most secure families of its kind on the market today, when used in the intended manner and under normal conditions.
- There are dishonest and possibly illegal methods used to breach the code protection feature. All of these methods, to our knowledge, require using the Microchip products in a manner outside the operating specifications contained in Microchip's Data Sheets. Most likely, the person doing so is engaged in theft of intellectual property.
- Microchip is willing to work with the customer who is concerned about the integrity of their code.
- Neither Microchip nor any other semiconductor manufacturer can guarantee the security of their code. Code protection does not mean that we are guaranteeing the product as “unbreakable.”

Code protection is constantly evolving. We at Microchip are committed to continuously improving the code protection features of our products. Attempts to break Microchip's code protection feature may be a violation of the Digital Millennium Copyright Act. If such acts allow unauthorized access to your software or other copyrighted work, you may have a right to sue for relief under that Act.

Information contained in this publication regarding device applications and the like is provided only for your convenience and may be superseded by updates. It is your responsibility to ensure that your application meets with your specifications. MICROCHIP MAKES NO REPRESENTATIONS OR WARRANTIES OF ANY KIND WHETHER EXPRESS OR IMPLIED, WRITTEN OR ORAL, STATUTORY OR OTHERWISE, RELATED TO THE INFORMATION, INCLUDING BUT NOT LIMITED TO ITS CONDITION, QUALITY, PERFORMANCE, MERCHANTABILITY OR FITNESS FOR PURPOSE. Microchip disclaims all liability arising from this information and its use. Use of Microchip devices in life support and/or safety applications is entirely at the buyer's risk, and the buyer agrees to defend, indemnify and hold harmless Microchip from any and all damages, claims, suits, or expenses resulting from such use. No licenses are conveyed, implicitly or otherwise, under any Microchip intellectual property rights unless otherwise stated.

Microchip received ISO/TS-16949:2009 certification for its worldwide headquarters, design and wafer fabrication facilities in Chandler and Tempe, Arizona; Gresham, Oregon and design centers in California and India. The Company's quality system processes and procedures are for its PIC® MCUs and dsPIC® DSCs, KEELOQ® code hopping devices, Serial EEPROMs, microperipherals, nonvolatile memory and analog products. In addition, Microchip's quality system for the design and manufacture of development systems is ISO 9001:2000 certified.

**QUALITY MANAGEMENT SYSTEM
CERTIFIED BY DNV
= ISO/TS 16949 =**

Trademarks

The Microchip name and logo, the Microchip logo, AnyRate, dsPIC, FlashFlex, flexPWR, Heldo, JukeBlox, KEELOQ, KEELOQ logo, Klear, LANCheck, LINK MD, MediaLB, MOST, MOST logo, MPLAB, OptoLyzer, PIC, PICSTART, PIC32 logo, RightTouch, SpyNIC, SST, SST Logo, SuperFlash and UNI/O are registered trademarks of Microchip Technology Incorporated in the U.S.A. and other countries.

ClockWorks, The Embedded Control Solutions Company, ETHERSYNCH, Hyper Speed Control, HyperLight Load, IntelliMOS, mTouch, Precision Edge, and QUIET-WIRE are registered trademarks of Microchip Technology Incorporated in the U.S.A.

Analog-for-the-Digital Age, Any Capacitor, AnyIn, AnyOut, BodyCom, chipKIT, chipKIT logo, CodeGuard, dsPICDEM, dsPICDEM.net, Dynamic Average Matching, DAM, ECAN, EtherGREEN, In-Circuit Serial Programming, ICSP, Inter-Chip Connectivity, JitterBlocker, KlearNet, KlearNet logo, MiWi, motorBench, MPASM, MPF, MPLAB Certified logo, MPLIB, MPLINK, MultiTRAK, NetDetach, Omniscient Code Generation, PICDEM, PICDEM.net, PICkit, PICtail, PureSilicon, RightTouch logo, REAL ICE, Ripple Blocker, Serial Quad I/O, SQL, SuperSwitcher, SuperSwitcher II, Total Endurance, TSHARC, USBCheck, VariSense, ViewSpan, WiperLock, Wireless DNA, and ZENA are trademarks of Microchip Technology Incorporated in the U.S.A. and other countries.

SQTP is a service mark of Microchip Technology Incorporated in the U.S.A.

Silicon Storage Technology is a registered trademark of Microchip Technology Inc. in other countries.

GestIC is a registered trademarks of Microchip Technology Germany II GmbH & Co. KG, a subsidiary of Microchip Technology Inc., in other countries.

All other trademarks mentioned herein are property of their respective companies.

© 2016, Microchip Technology Incorporated, Printed in the U.S.A., All Rights Reserved.

ISBN: 978-1-5224-0391-3



MICROCHIP

Worldwide Sales and Service

AMERICAS

Corporate Office

2355 West Chandler Blvd.
Chandler, AZ 85224-6199

Tel: 480-792-7200

Fax: 480-792-7277

Technical Support:

[http://www.microchip.com/
support](http://www.microchip.com/support)

Web Address:

www.microchip.com

Atlanta

Duluth, GA

Tel: 678-957-9614

Fax: 678-957-1455

Austin, TX

Tel: 512-257-3370

Boston

Westborough, MA

Tel: 774-760-0087

Fax: 774-760-0088

Chicago

Itasca, IL

Tel: 630-285-0071

Fax: 630-285-0075

Cleveland

Independence, OH

Tel: 216-447-0464

Fax: 216-447-0643

Dallas

Addison, TX

Tel: 972-818-7423

Fax: 972-818-2924

Detroit

Novi, MI

Tel: 248-848-4000

Houston, TX

Tel: 281-894-5983

Indianapolis

Noblesville, IN

Tel: 317-773-8323

Fax: 317-773-5453

Los Angeles

Mission Viejo, CA

Tel: 949-462-9523

Fax: 949-462-9608

New York, NY

Tel: 631-435-6000

San Jose, CA

Tel: 408-735-9110

Canada - Toronto

Tel: 905-673-0699

Fax: 905-673-6509

ASIA/PACIFIC

Asia Pacific Office

Suites 3707-14, 37th Floor
Tower 6, The Gateway
Harbour City, Kowloon

Hong Kong

Tel: 852-2943-5100

Fax: 852-2401-3431

Australia - Sydney

Tel: 61-2-9868-6733

Fax: 61-2-9868-6755

China - Beijing

Tel: 86-10-8569-7000

Fax: 86-10-8528-2104

China - Chengdu

Tel: 86-28-8665-5511

Fax: 86-28-8665-7889

China - Chongqing

Tel: 86-23-8980-9588

Fax: 86-23-8980-9500

China - Dongguan

Tel: 86-769-8702-9880

China - Hangzhou

Tel: 86-571-8792-8115

Fax: 86-571-8792-8116

China - Hong Kong SAR

Tel: 852-2943-5100

Fax: 852-2401-3431

China - Nanjing

Tel: 86-25-8473-2460

Fax: 86-25-8473-2470

China - Qingdao

Tel: 86-532-8502-7355

Fax: 86-532-8502-7205

China - Shanghai

Tel: 86-21-5407-5533

Fax: 86-21-5407-5066

China - Shenyang

Tel: 86-24-2334-2829

Fax: 86-24-2334-2393

China - Shenzhen

Tel: 86-755-8864-2200

Fax: 86-755-8203-1760

China - Wuhan

Tel: 86-27-5980-5300

Fax: 86-27-5980-5118

China - Xian

Tel: 86-29-8833-7252

Fax: 86-29-8833-7256

ASIA/PACIFIC

China - Xiamen

Tel: 86-592-2388138

Fax: 86-592-2388130

China - Zhuhai

Tel: 86-756-3210040

Fax: 86-756-3210049

India - Bangalore

Tel: 91-80-3090-4444

Fax: 91-80-3090-4123

India - New Delhi

Tel: 91-11-4160-8631

Fax: 91-11-4160-8632

India - Pune

Tel: 91-20-3019-1500

Japan - Osaka

Tel: 81-6-6152-7160

Fax: 81-6-6152-9310

Japan - Tokyo

Tel: 81-3-6880-3770

Fax: 81-3-6880-3771

Korea - Daegu

Tel: 82-53-744-4301

Fax: 82-53-744-4302

Korea - Seoul

Tel: 82-2-554-7200

Fax: 82-2-558-5932 or

82-2-558-5934

Malaysia - Kuala Lumpur

Tel: 60-3-6201-9857

Fax: 60-3-6201-9859

Malaysia - Penang

Tel: 60-4-227-8870

Fax: 60-4-227-4068

Philippines - Manila

Tel: 63-2-634-9065

Fax: 63-2-634-9069

Singapore

Tel: 65-6334-8870

Fax: 65-6334-8850

Taiwan - Hsin Chu

Tel: 886-3-5778-366

Fax: 886-3-5770-955

Taiwan - Kaohsiung

Tel: 886-7-213-7828

Taiwan - Taipei

Tel: 886-2-2508-8600

Fax: 886-2-2508-0102

Thailand - Bangkok

Tel: 66-2-694-1351

Fax: 66-2-694-1350

EUROPE

Austria - Wels

Tel: 43-7242-2244-39

Fax: 43-7242-2244-393

Denmark - Copenhagen

Tel: 45-4450-2828

Fax: 45-4485-2829

France - Paris

Tel: 33-1-69-53-63-20

Fax: 33-1-69-30-90-79

Germany - Dusseldorf

Tel: 49-2129-3766400

Germany - Karlsruhe

Tel: 49-721-625370

Germany - Munich

Tel: 49-89-627-144-0

Fax: 49-89-627-144-44

Italy - Milan

Tel: 39-0331-742611

Fax: 39-0331-466781

Italy - Venice

Tel: 39-049-7625286

Netherlands - Drunen

Tel: 31-416-690399

Fax: 31-416-690340

Poland - Warsaw

Tel: 48-22-3325737

Spain - Madrid

Tel: 34-91-708-08-90

Fax: 34-91-708-08-91

Sweden - Stockholm

Tel: 46-8-5090-4654

UK - Wokingham

Tel: 44-118-921-5800

Fax: 44-118-921-5820

07/14/15