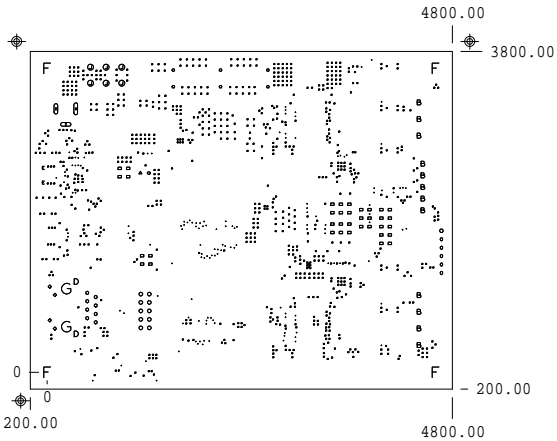


REVISIONS	DATE
INITIAL RELEASE	JUL 2014
REV B	OCT 2014

- NOTES: (UNLESS OTHERWISE SPECIFIED)
1. SPECIFICATIONS:
1.1 FABRICATE AND INSPECT PER IPC-6012, CLASS 2, AQL .25, GENERAL
INSPECTION LEVEL 11, IN CONJUNCTION WITH SUPPLIED GERBER FILES.
2. MATERIAL:
2.1 RAW MATERIAL: FR4
2.2 FINISHED BOARD THICKNESS TO BE 62 MIL +/- 10%
2.3 COPPER THICKNESS: 1oz + PLATING FOR OUTER LAYERS AND 1oz ON INTERNAL LAYERS.
3. FINISH:
3.1 IMMERSION GOLD
4. DRILLING:
4.1 ALL HOLE DIAMETERS ARE FINISHED SIZES.
4.2 ALL HOLES TO BE +/- .003 FROM TRUE POSITION UNLESS OTHERWISE SPECIFIED.
5. IMPEDANCE DETAILS: ☒ YES / NO
IF YES, SEE LAYER STACK UP FOR DETAILS.
6. SOLDERMASK:
6.1 APPLY LIQUID PHOTO IMAGABLE (WETFILM) ON
BOTH SIDES PER IPC-SM-840, CLASS II, TYPE B, BLACK COLOR.
7. SILKSCREEN:
7.1 SILKSCREEN USING WHITE NON-CONDUCTIVE EPOXY.
8. MAXIMUM WARP AND TWIST TO BE .005 INCH PER INCH PER IPC-275-D CLASS A.
9. TOOLING HOLE: SHALL BE DRILLED FIRST AND PLUGGED DURING PLATING.
10. COUNTER BORE,COUNTER SINK REQUIREMENT: YES / ☒ NO
11. NO VENDOR LOGO OR NAME ON THE BOARD
12. ALL BOARDS MUST BE NETLIST TESTED USING ROUNDED TEST PINS ONLY,
NO MARKS FROM TEST TO BE VISIBLE ON FINISHED BOARD
13. BOARD MUST BE FREE FROM VOIDS, PITS, SCRATCHES AND
RESIDUE SUCH AS DIRT, GREASE ETC.
14. FINISHED BOARDS ARE TO BE INDIVIDUALLY PACKAGED IN
CONTAMINANT FREE CLEAR POLYETHYLENE BAGS.
15. THIS BOARD IS ROHS COMPLAIN : ☒ YES / NO
16. CLIP SILKSCREEN ON NO MASK AREA.
17. IMPEDANCE TOLERANCE SHOULD BE +/- 10%
18. REMOVE UNUSED PAD IN ALL INNER LAYERS.
19. BOARD DIMENSIONS ARE IN MILS.
20. DEBURR ALL SHARP EDGES.

DRILL CHART: TOP to BOTTOM				
ALL UNITS ARE IN MILS				
FIGURE	SIZE	TOLERANCE	PLATED	QTY
	10.0	+3.0/-3.0	PLATED	139
.	12.0	+3.0/-3.0	PLATED	864
*	33.465	+1.969/-1.969	PLATED	6
o	38.0	+3.0/-3.0	PLATED	8
*	40.0	+3.0/-0.0	PLATED	4
o	40.0	+3.0/-3.0	PLATED	1
*	40.0	+3.0/-3.0	PLATED	36
o	40.0	+3.0/-3.0	PLATED	5
*	40.0	+4.0/-0.0	PLATED	1
*	40.0	+4.0/-0.0	PLATED	1
o	47.0	+3.0/-3.0	PLATED	10
*	62.0	+3.0/-3.0	PLATED	12
D	66.0	+3.0/-3.0	PLATED	2
Q	73.0	+3.0/-3.0	PLATED	6
*	35.429	+2.0/-0.0	NON-PLATED	2
F	125.0	+2.0/-2.0	NON-PLATED	4
G	126.0	+2.0/-0.0	NON-PLATED	2
Ø	123.0x45.0	+3.0/-3.0	PLATED	1
∞	123.0x45.0	+3.0/-3.0	PLATED	1
Ø	143.0x45.0	+3.0/-3.0	PLATED	1

PACTRON 3000 PATRICK HENRY DRIVE, SANTA CLARA, CA 95054. 408-329-5500(PHONE), 408-747-1239(FAX)		
PROJECT NAME	DUAL-AXIS-SF2-MC-STARTER-KIT	REV :B
DATE	OCT 2014	
PART NUMBER	DVP-101-000417-001	
PACTRON PART NUMBER	305-PD-14-0761	



PACTRON		
NAME : DUAL-AXIS-SF2-MC-STARTER-KIT		
DATE : OCT 2014	JOB : 305-PD-14-0761	REV.B
LAYER: FAB	SHEET	

STACKUP: 6 LAYERS		CONTROLLED IMPEDANCE REQUIRED		
		50 OHM SINGLE	100 OHM DIFFERENTIAL	90 OHM DIFFERENTIAL
TOP (1.700 mils)		5 MIL	4.9 / 9.1 MIL	6 / 7 MIL
FR-4	DIELECTRIC (4.741 mils)			
	GND1 (1.400 mils)			
FR-4	DIELECTRIC (5.906 mils)			
	SIGNAL (1.400 mils)	5 MIL	4.9 / 9.1 MIL	
FR-4	DIELECTRIC (20.935 mils)			
	POWER (1.400 mils)			
FR-4	DIELECTRIC (5.906 mils)			
	GND2 (1.400 mils)			
FR-4	DIELECTRIC (4.741 mils)			
BOTTOM (1.700 mils)		5 MIL	4.9 / 9.1 MIL	6 / 7 MIL