

**CCB 7199**

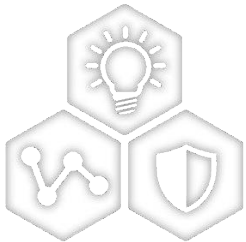
**Pre and Post Change Summary**

**PCN #: DSNO-18DVZK566**



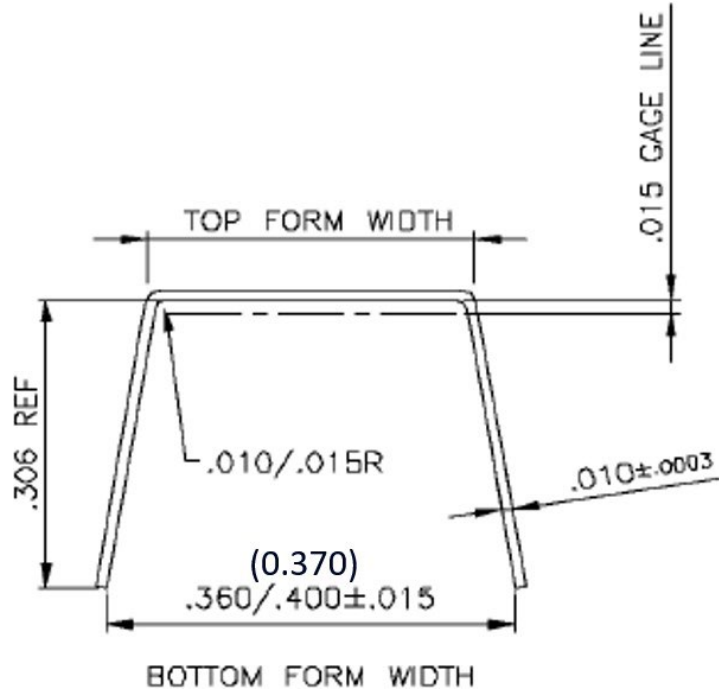
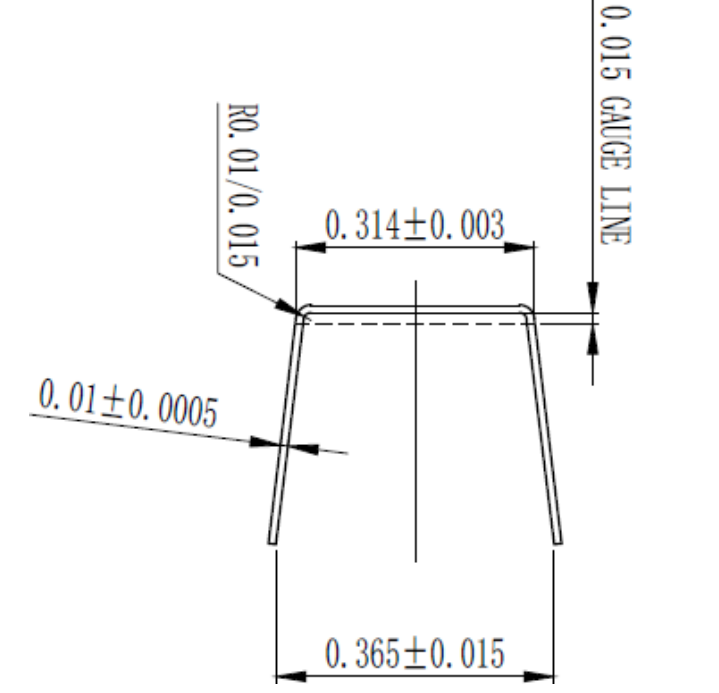
---

A Leading Provider of Smart, Connected and Secure Embedded Control Solutions

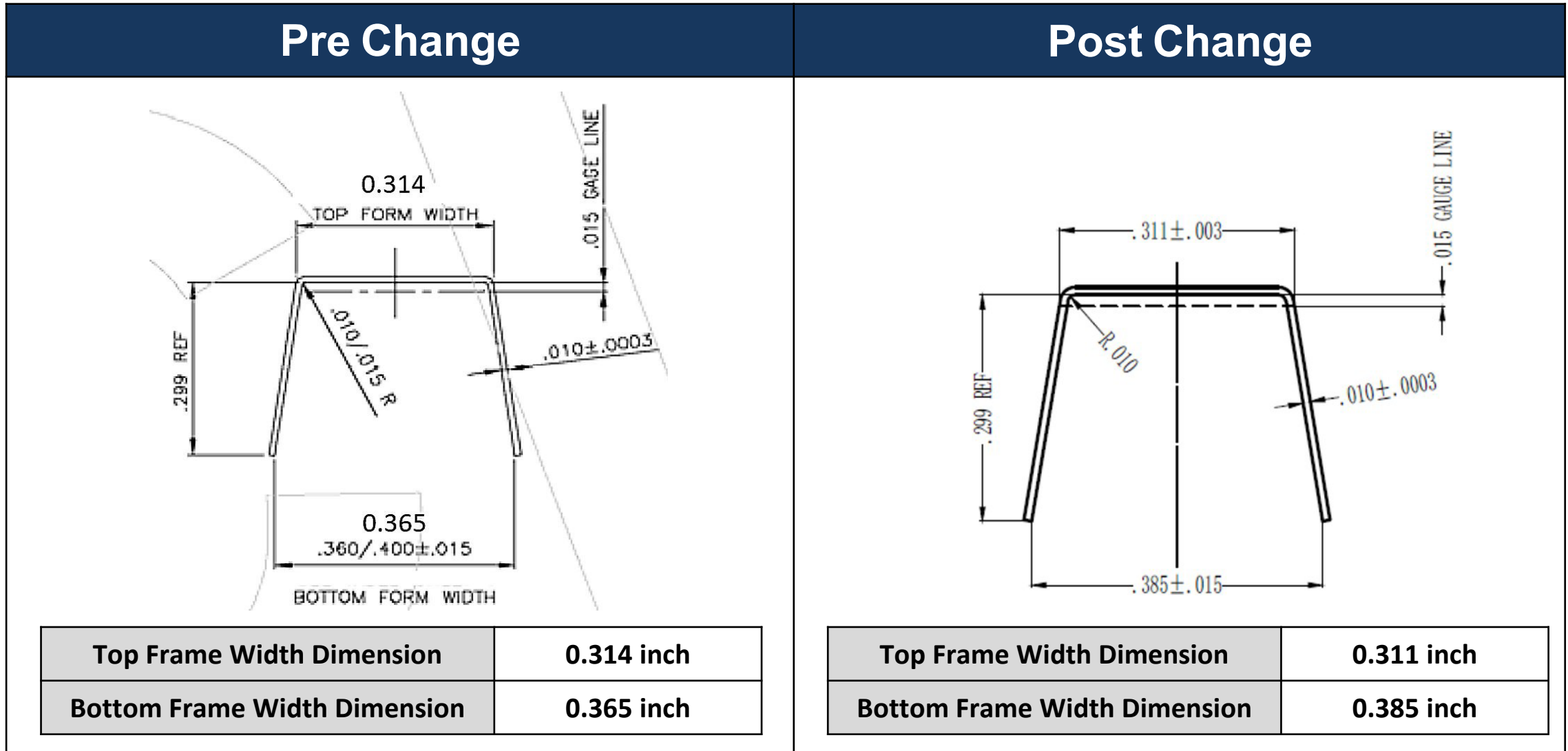


SMART | CONNECTED | SECURE

# Frame Comparison – 14L SSI (Bottom Frame Width)

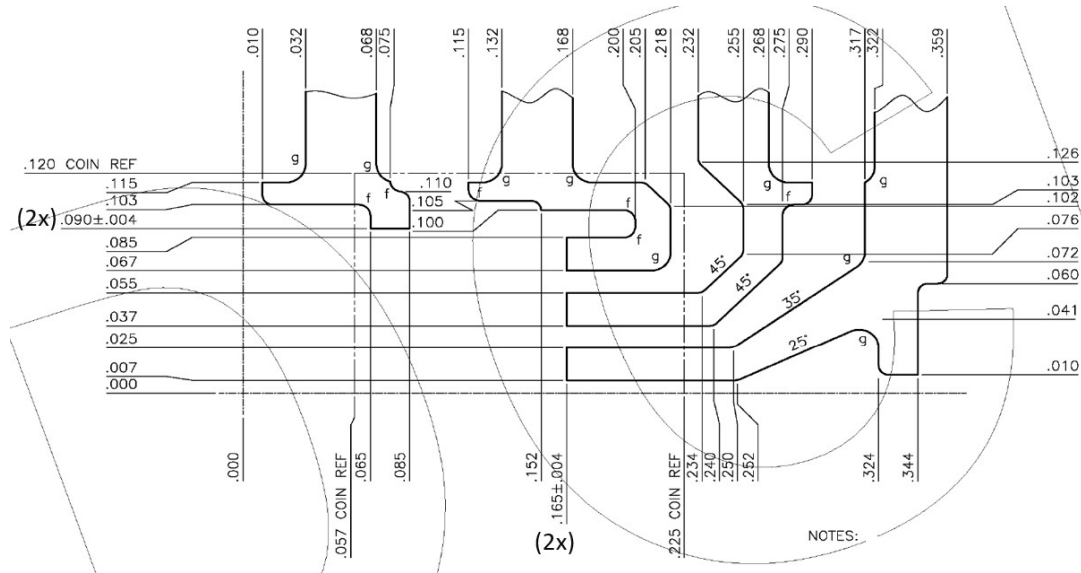
Pre Change	Post Change				
 <table border="1" data-bbox="377 1062 1128 1210"> <tr> <th>Bottom Frame Width Dimension</th> </tr> <tr> <td>0.370 inch</td> </tr> </table>	Bottom Frame Width Dimension	0.370 inch	 <table border="1" data-bbox="1454 1062 2206 1210"> <tr> <th>Bottom Frame Width Dimension</th> </tr> <tr> <td>0.365 inch</td> </tr> </table>	Bottom Frame Width Dimension	0.365 inch
Bottom Frame Width Dimension					
0.370 inch					
Bottom Frame Width Dimension					
0.365 inch					

# Frame Comparison – 16L SSI (Top & Bottom Frame Width)



# Frame Comparison – 16L LSI (Frame Cavity Dimension)

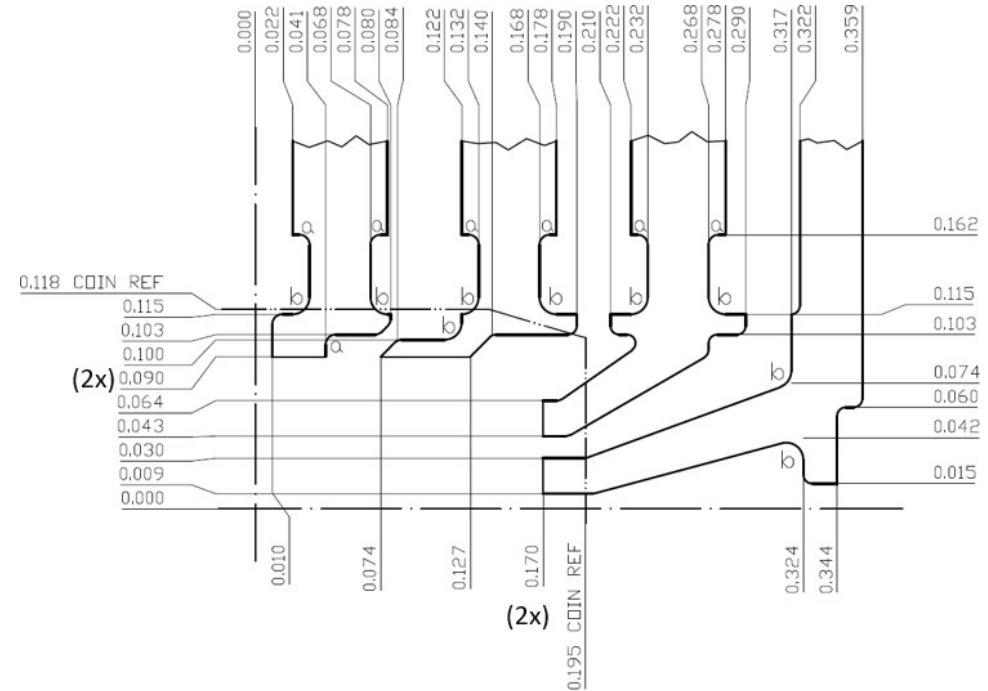
## Pre Change



**Frame Cavity Dimension**

**0.330 x 0.180 inch**

## Post Change



**Frame Cavity Dimension**

**0.340 x 0.180 inch**

# Frame Comparison – 16L LSI (Top & Bottom Frame Width)

