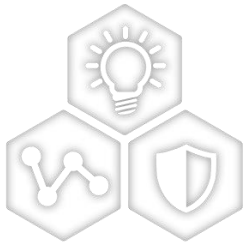


CCB# 6061.001
Pre and Post Change Summary
PCN #: DSNO-27BXFC465



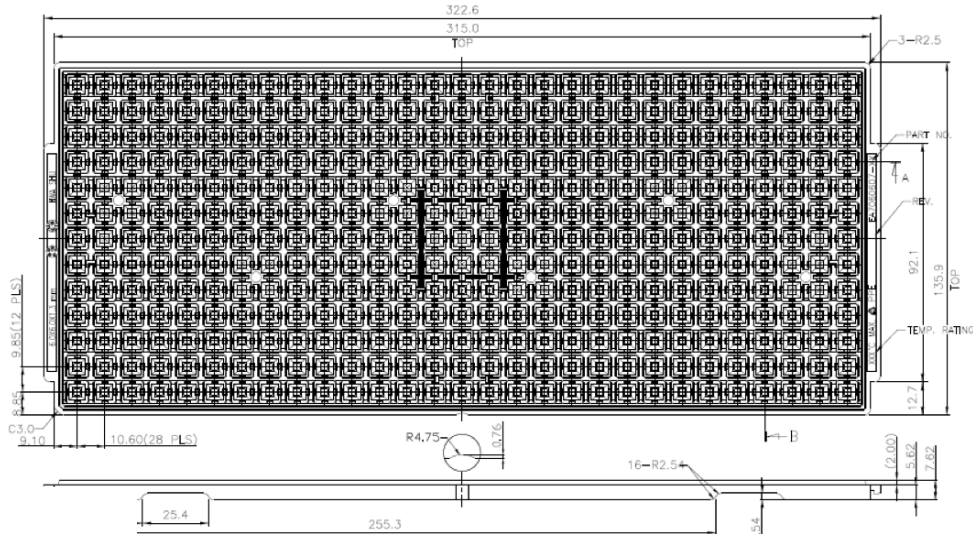
A Leading Provider of Smart, Connected and Secure Embedded Control Solutions



SMART | CONNECTED | SECURE

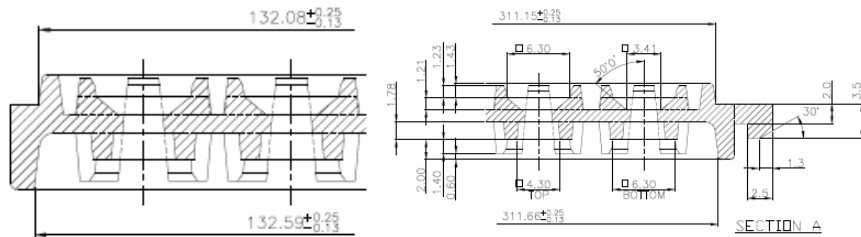
Pre and Post Change Summary – Tray

ASE9

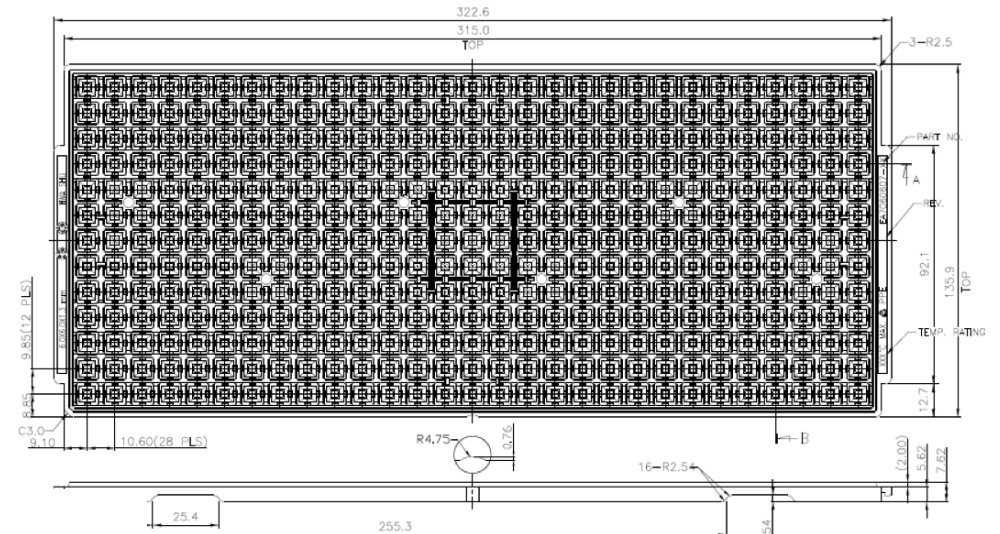


NOTES :

- (S.R. OHM/SQ.) MEANS SURFACE ELECTRIC RESISTIVITY OF THE TRAY.
- THE MOLDED TRAY'S MATERIAL SHALL BE RIGID ENOUGH TO AVOID DAMAGE TO THE COMPONENT DURING HANDLING, LOADING, BAKING, TESTING, SHIPPING AND PLACING.
- TRAYS ARE STACKABLE WITHOUT INTERFERENCE AND WILL NOT STICK TOGETHER DURING UNSTACKING OPERATION.
- THE CELLS MARKED WITH CROSS SYMBOL ARE FOR VACUUM PICKUP AREA AND WITHOUT THRU HOLES.
- TOTAL USABLE CELLS 13X29=377.
- ALL DIMENSIONS ARE IN MILLIMETERS.
- TOOL BUILDING DATE NOV.2009.

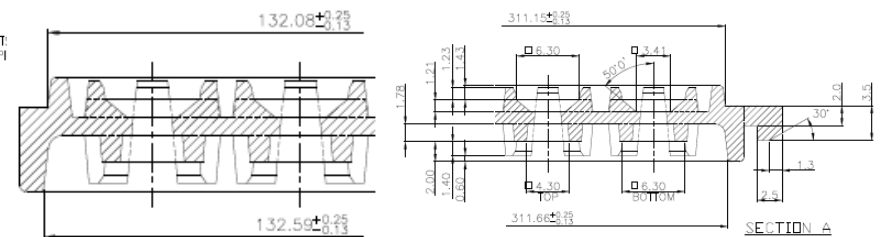


MPHL



NOTES :

- (S.R. OHM/SQ.) MEANS SURFACE ELECTRIC RESISTIVITY OF THE TRAY.
- THE MOLDED TRAY'S MATERIAL SHALL BE RIGID ENOUGH TO AVOID DAMAGE TO THE COMPONENT DURING HANDLING, LOADING, BAKING, TESTING, SHIPPING AND PLACING.
- TRAYS ARE STACKABLE WITHOUT INTERFERENCE AND WILL NOT STICK TOGETHER DURING UNSTACKING OPERATION.
- THE CELLS MARKED WITH CROSS SYMBOL ARE FOR VACUUM PICKUP AREA AND WITHOUT THRU HOLES.
- TOTAL USABLE CELLS 13X29=377.
- ALL DIMENSIONS ARE IN MILLIMETERS.
- TOOL BUILDING DATE NOV.2009.



Plant	Tray Color	Tray Dimension
ASE9	Black	315mm X 135.9mm X 7.62mm
MPHL	Black	315mm X 135.9mm X 7.62mm

Pre and Post Change Summary – Moisture Barrier Bag

ASE9



MPHL



Plant	Length (mm)	Width (mm)
ASE9	570	300
MPHL	482.6	228.6

Pre and Post Change Summary – Carton Box

ASE9




MPHL

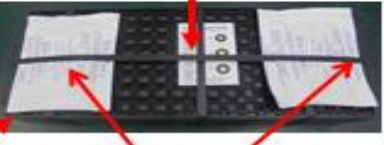



Plant	Length (mm)	Width (mm)	Height (mm)
ASE9	384	365	104
MPHL	371	162	88


Pre and Post Change Summary – Packing Method

ASE9

1  **CHAMFER 斜角**

2  **Chamfer 斜角**
Desiccant 1 units x 2 1單位乾燥劑 x2
MBB 真空袋

3  **Bubble Wrap 粉紅氣泡布**

4  **MSID sticker MSID 標籤**
Tape 膠帶
Tray Inner Box Label 內盒標籤
ASET small bar code ASET2維小標籤

10+1 stack STRAPS (3S1L) 打包帶 (3短1長)

HIC 溼度指示卡

inner box Label 真空袋標籤

MPHL



Max: 10 full trays + 1 empty tray cover
PP Strapping: 3 crosswise & 1 lengthwise

